



Fernandina Beach Municipal Airport, Runway 9/27



Fernandina Beach Municipal Airport, Runway 13/31



Fernandina Beach Municipal Airport, Runway 4/22

Fernandina Beach Municipal Airport



- As a federally assisted airport there is an obligation to operate for the use and benefit of the public, however, as an enterprise fund of the City there is also an obligation to operate as a business to its public purpose.
- No local tax revenue used to operate Airport.
- Serves general aviation, tourism, and business need of City of Fernandina Beach and Amelia Island.
- Exceptionally good Airport facilities for a City our size, however, there is always a need to modernize and enhance.
- Ample land on Airport available for revenue generation.
- City staff of two – Manager and Airport Operations Specialist (part-time)
- Airport identifier = FHB



Airport Goals

- Future development plans and operational procedures carried out in a manner to provide economic self-sufficiency. In support to this self-sufficiency the FAA requires that all monetary surplus be reinvested back into the Airport for operations, improvements, and maintenance of Airport.
- Provide efficient service to customers in a business like manner.
- Provide safe, secure facility that meets FAA and FDOT rules and requirements regarding Airport operation.
- Repair, restore, and improve existing facilities and infrastructure.
- Implement appropriate rates and charges.
- Aggressively seek grant funding.
- Develop and market the Airport.
- Increase awareness of value of Airport to community.
- Full transparent accounting.



Airport Value to Community

- An important gateway to the community and key element or catalyst to economy growth.
 - Each runway should be considered a Main Street to the community
 - Valuable asset, least understood and least appreciated
 - Supports economic development and community's main industry – tourism
- Serves important role in the transportation system of Fernandina Beach, Amelia Island, Nassau County, and part of Northeast Florida Aviation System as well as National Plan of Integrated Airport Systems (NPIAS) developed by FAA.
- Supports industrial and corporate recruitment. Availability of an Airport for business aircraft is among top five requirements for companies considering relocation or expansion.
- Identified and included as specifically required by Florida Statutes within the elements (chapters) of the City Comprehensive Plan.
- Critical component in the island's emergency management plan.



Airport Facilities

- Three Runways – all in good condition
 - Runway 4/22 – 5300 feet – primary runway
 - Runway 9/27 – 5001 feet – secondary runway
 - Runway 13/31 – 5152 feet
- Five Taxiways – A, B, C, D, and E
- GPS Instrument Approach (LPV) to Runway 13
- GPS Instrument Approach (LNAV) to Runway 22
- Automated Weather Observation System (AWOS III)
- One 12,000 gallon jet fuel tank (Jet A) and one 12,000 gallon aviation fuel tank (Av Gas)
- Airport operates 24/7 and attended from 0800 to 2000
- Design aircraft is the Gulfstream G-IV



Existing Airport Tenants and Users

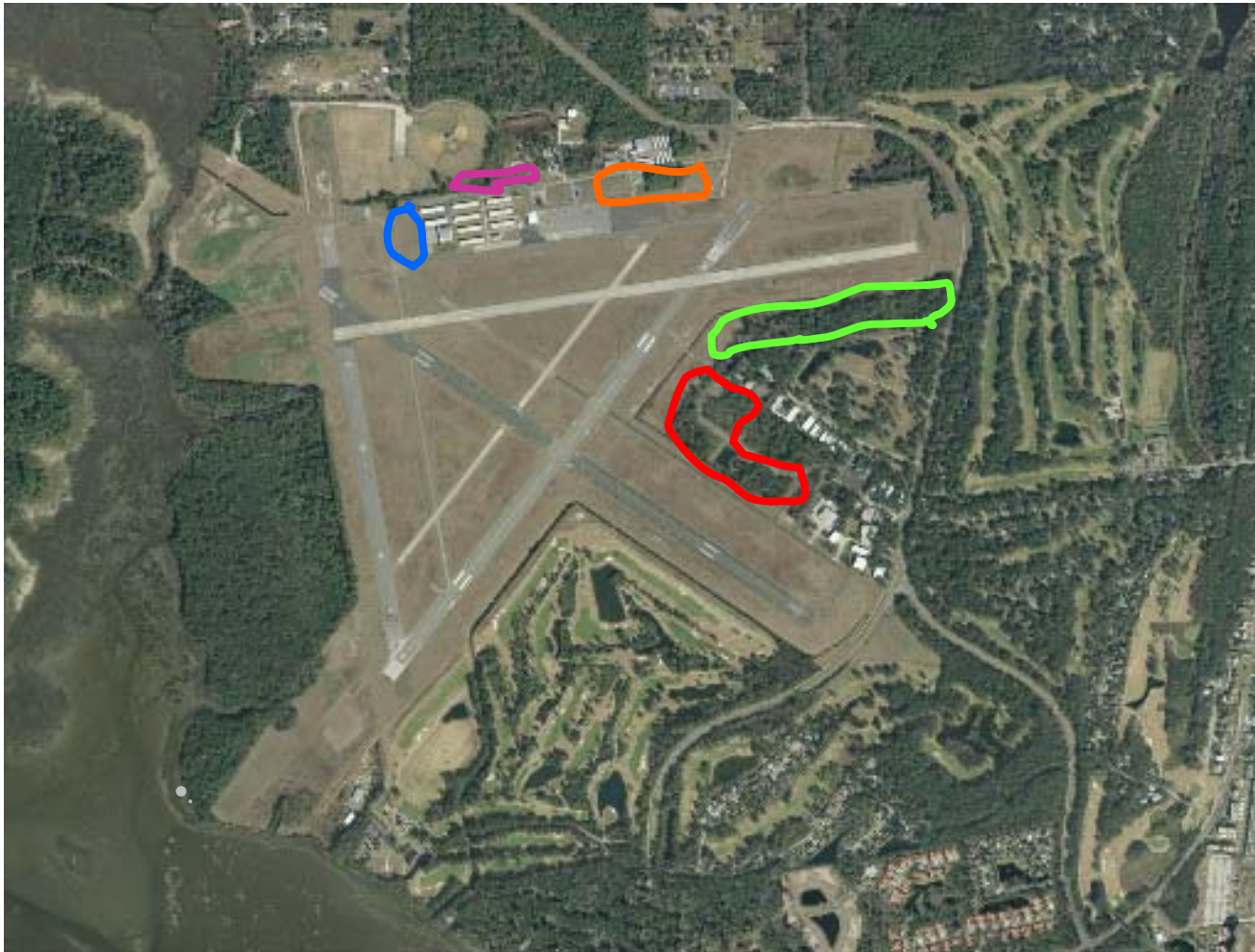
- 52 T-hangars/Row Hangars (all occupied with modest waiting list)
- Approximately 77 Based Aircraft
- Five Corporate Hangars
- One Fixed Based Operator
- One Maintenance Operator
- One Skydiving Operator
- One Paraglide Operator
- One Banner Towing Operator



Little Known Airport Value to Community

- Airport provides 26 acres of land used by the City Parks and Recreation Department for soccer and baseball facilities in exchange for City provided services to the Airport.
- Airport contractually provides land on behalf of the City to Nassau Humane Society for a dog park and for City Animal Control services.
- Airport provides 2 acres of land for the City Mulch Site in exchange for City provided services to the Airport.
- Airport provides reduced hangar rental to Civil Air Patrol (CAP) in exchange for emergency service assistance to City.
- Airport provides land for a car park location opportunity for “big events” such as Concours d’Elegance (a revenue source for Airport and aviation volunteer organizations).
- Amelia River golf course and portions of city golf course are located on Airport property.

Attractive Areas Available for Development on Airport





Airport Future

- Well positioned to better serve the community and/or support its tenants, users, customers, and the public by providing attractive, safe, and well maintained facilities.
- Continue facility improvements and modernization.
- Pursue additional economic development opportunities.
- Establish a cooperative and mutually beneficial relationship with a fixed based operator that defines and develops the essential public/private partnership needed for a successful general aviation airport.
- An economic engine that to the community.