



**MEETING AGENDA  
BEACH ACCESS COMMITTEE (BAC)  
MARCH 11, 2021, 1:30-3:00 PM  
CITY COMMISSION CHAMBERS  
204 ASH STREET, FERNANDINA BEACH, FL 32034**

*Beach Access Committee members*

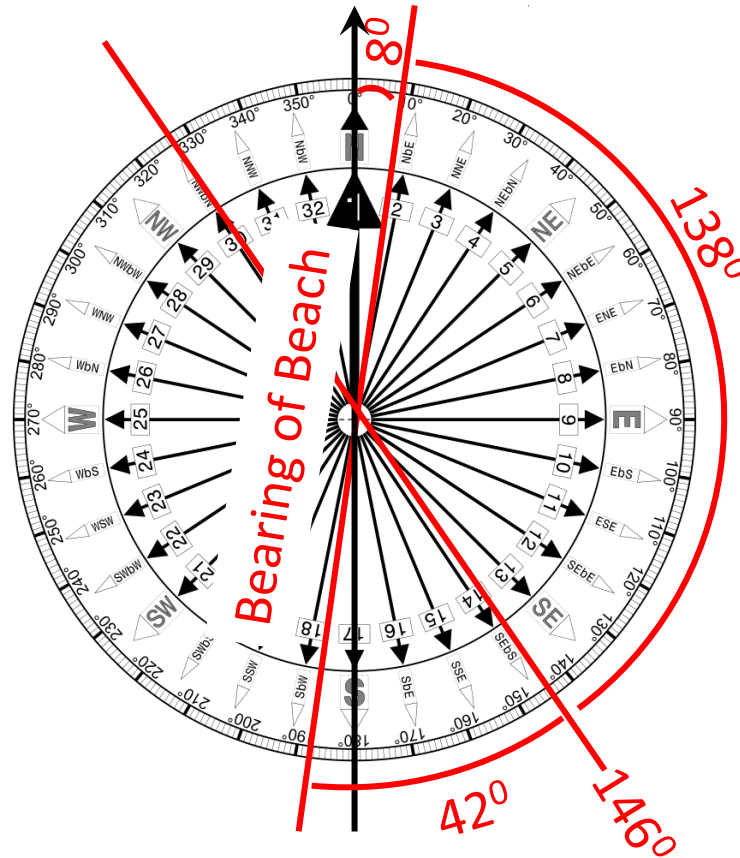
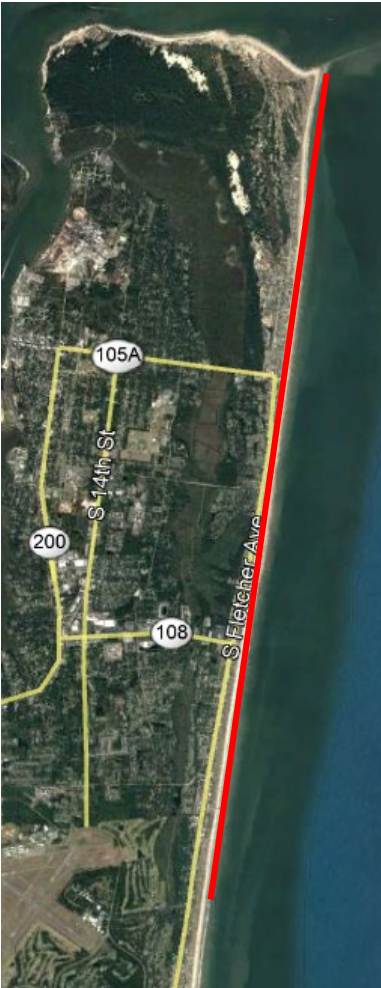
- *Victoria Robas*
  - *Bryn Byron*
  - *Emily Carmain*
  - *Mac Morriss*
  - *Robert Prager*
  - *Mark Tomes*
  - *Tom Yankus*
  - *Charles George, COFB*
  - *Lorelei Jacobs, COFB*
  - *Joe Pitcheralle, COFB*
1. BAC review of communications received from the public since last meeting (none) and invitation to public to make remarks.
  2. Approval of March 5, 2021 meeting minutes.
  3. Review and finalization of recommendations and prioritization levels for all 56 Beach Accesses.
  4. Final Discussion and Adjournment until next BAC meeting Thursday March 18, 2021, at 1:30 p.m.



**MEETING MINUTES  
BEACH ACCESS COMMITTEE (BAC)  
MARCH 4, 2021, 1:30-3:00 PM  
CITY COMMISSION CHAMBERS  
204 ASH STREET, FERNANDINA BEACH, FL 32034**

1. BAC attendance was called with all *Beach Access Committee* members present except for *Robert Prager and Mark Tomes*, both of whom had given notice in advance of their absence due to conflicts.
2. BAC reviewed communications received from the public since last meeting (none) and Chair Robas invited public comment (none).
3. BAC approved February 25, 2021 meeting minutes.
4. BAC reviewed and provided recommendations for and prioritization of improvements for all 56 Beach Accesses. Comments were made that parking estimates needed to be re-evaluated. Additionally, Beach Access Evaluation form was amended to provide clarity on meaning of handrails/guard rails.
5. Final Discussion and Adjournment until next BAC meeting Thursday March 11, 2021 at 1:30 p.m.

# ANGLE OF TERMINAL ACCESS MEASURED FROM THE BEACH

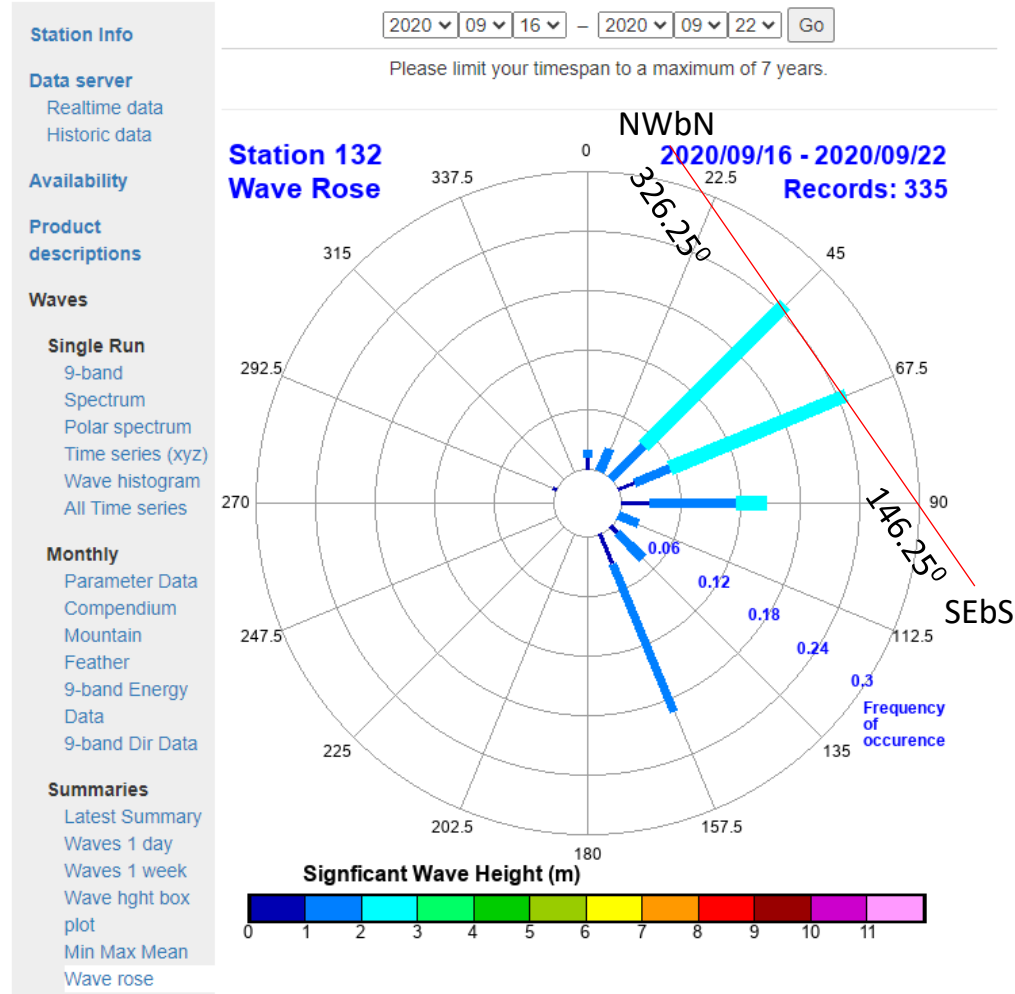


The average bearing of beach is approximately  $8^{\circ}$ .

The bearing of terminal access should be  $146^{\circ}$  based on the wave rose.

The angle of the terminal access measures from the north is  $146^{\circ} - 8^{\circ} = 138^{\circ}$  or measured from the south is  $180^{\circ} - 138^{\circ} = 42^{\circ}$ .

This analysis does not consider wave refraction in setting the angle. Actual angle may be less than  $42^{\circ}$ .



Last major damaging Nor'easter  
 September 16 – 22, 2020.

- Based on the wave rose of damaging Nor'easter, to resist nor'easters the alignment of terminal access should trend from the NWbN to the SEbS (326.25°).
- This assumes no refraction of waves at the shore.

**City of Fernandina Beach Beach Access Evaluation**

**SECTION 1: Beach Access Data and Recommendations**

1	Date Form Completed:	3/1/2021
2	Beach Access Number and Location:	17 N - North Kimberly
3	Beach Access Type:	Nothing. City Utilities ROW deeded to private homeowner at location.
4	Previous Construction/Repair/Walkover Removal Data:	
5	# of ADA/Non-ADA Parking Spaces:	0/0
6	Galvanized-steel round pipes present?	N/A
7	Ramp(s) Present, if so, Streetside, Beachside or both:	N/A
8	Distance between streetside sand and interior foredune in linear feet:	
9	Short-Term Recommendations: <i>Recommended for implementation between 1-2 years.</i>	
10	Medium-Term Recommendations: <i>Recommended for implementation between 3-4 years.</i>	
11	Long-Term Recommendations: <i>Recommended for implementation after 4 years (or possibly sooner) if warranted by future conditions.</i>	
12	Other beach access comments/observations including comments/observations provided by City Engineer and City P&R personnel.	

**SECTION 2: Short, Medium and Long-Term Recommendation Rankings and Guiding Principles. Do not fill in this section until Section 1-Beach Access Data and Recommendations have been completed for all beach accesses.**

	Rank and Guiding Principles	(For City P&R Dept. Only: Implementation Notes and Date Project Completed)
13(a)	Sequential Rank of <u>Short-Term</u> Recommendations.	
13(b)	BAC Guiding Principle(s) Supported by Short-Term Recommendations:	
14(a)	Sequential Rank of <u>Medium-Term</u> Recommendations:	
14(b)	BAC Guiding Principle(s) Supported by Medium-Term Recommendations:	
15(a)	Sequential Rank of <u>Long-Term</u> Recommendations:	
15(b)	BAC Guiding Principle(s) Supported by Long Term Recommendations:	

Note to persons completing this form: Please hold the Alt Key and tap Return/Enter Key to insert a new line in a cell.

**City of Fernandina Beach Beach Access Evaluation**

**SECTION 1: Beach Access Data and Recommendations**

1	<b>Date Form Completed:</b>	3/2/2021
2	<b>Beach Access Number and Location:</b>	16N - Ferriera
3	<b>Beach Access Type:</b>	Walkover
4	<b>Previous Construction/Repair/Walkover Removal Data:</b>	Walkover was rennovated in 2008. West Stairs were replaced in 2020.
5	<b># of ADA/Non-ADA Parking Spaces:</b>	Parking is available in close proximity, on Lisa across the street, half a block down.
6	<b>Galvanized-steel round guardrail present?</b>	Yes, but grab-rails going up the steps are not present.
7	<b>Ramp(s) Present, if so, Streetside, Beachside or both:</b>	No
8	<b>Distance between streetside sand and interior foredune in linear feet:</b>	
9	<b>Short-Term Recommendations: <i>Recommended for implementation between 1-2 years.</i></b>	1.) Verify that Beach Walkover, walkthroughs and peripheral trails at Beach Access 16N are located on City ROW prior to making any improvements. 2.) Replace missing directional sign at 16N Walkover to improve accuracy of directions to public parking. 3.) Install Posts and Ropes to delineate current rail and angle data pproximately 45° after the foredune to slow future storm surge.
10	<b>Medium-Term Recommendations: <i>Recommended for implementation between 3-4 years.</i></b>	1.) Add grab rails at stair locations.
11	<b>Long-Term Recommendations: <i>Recommended for implementation after 4 years (or possibly sooner) if warranted by future conditions.</i></b>	1.) Current walkover is ok for now but given the relatively-short length of the beach at 16N, future resiliency would be improved by extending the walkover over the foredune to help reduce pedestrian-created channels for stormwater to surge through. 2.) Ramps should replace stairs at the street and beach side of walkover at 16N to increase walkover usage and deter the creation of walkthroughs.
12	<b>Other beach access comments/observations including comments/observations provided by City Engineer and City P&amp;R personnel.</b>	C. George " 16N - 4N all need to be packaged together as one big project for construction purposes." R. Prager: "appears to be on private property and not in the official survey of ROW." Dune is overtaking/crushing walkover. Parking is around the corner.

**SECTION 2: Short, Medium and Long-Term Recommendation Rankings and Guiding Principles. Do not fill in this section until Section 1-Beach Access Data and Recommendations have been completed for all beach accesses.**

	<b>Rank and Guiding Principles</b>	<b>(For City P&amp;R Dept. Only: Implementation Notes and Date Project Completed)</b>
13(a) <b>Sequential Rank of <u>Short-Term</u> Recommendations.</b>		
13(b) <b>BAC Guiding Principle(s) Supported by Short-Term Recommendations:</b>		
14(a) <b>Sequential Rank of <u>Medium-Term</u> Recommendations:</b>		
14(b) <b>BAC Guiding Principle(s) Supported by Medium-Term Recommendations:</b>		
15(a) <b>Sequential Rank of <u>Long-Term</u> Recommendations:</b>		
15(b) <b>BAC Guiding Principle(s) Supported by Long Term Recommendations:</b>		

Note to persons completing this form: Please hold the Alt Key and tap Return/Enter Key to insert a new line in a cell.

**City of Fernandina Beach Beach Access Evaluation**

**SECTION 1: Beach Access Data and Recommendations**

1	<b>Date Form Completed:</b>	3/2/2021
2	<b>Beach Access Number and Location:</b>	15N Lowenstein
3	<b>Beach Access Type:</b>	City ROW not developed as a Beach Access
4	<b>Previous Construction/Repair/Walkover Removal Data:</b>	
5	<b># of ADA/Non-ADA Parking Spaces:</b>	20/0. Distributed parking for 20 on average at each of 10 accesses.
6	<b>Galvanized-steel round guardrail present?</b>	No
7	<b>Ramp(s) Present, if so, Streetside, Beachside or both:</b>	No
8	<b>Distance between streetside sand and interior foredune in linear feet:</b>	
9	<b>Short-Term Recommendations: <i>Recommended for implementation between 1-2 years.</i></b>	No recommendations.
10	<b>Medium-Term Recommendations: <i>Recommended for implementation between 3-4 years.</i></b>	
11	<b>Long-Term Recommendations: <i>Recommended for implementation after 4 years (or possibly sooner) if warranted by future conditions.</i></b>	Review for further development considerations if needed.
12	<b>Other beach access comments/observations including comments/observations provided by City Engineer and City P&amp;R personnel.</b>	C. George " 16N - 4N all need to be packaged together as one big project for construction purposes." R. Prager: "appears to be on private property and not in the Lowenstein survey ROW." Distributed parking for 20 at each of 10 accesses.

**SECTION 2: Short, Medium and Long-Term Recommendation Rankings and Guiding Principles. Do not fill in this section until Section 1-Beach Access Data and Recommendations have been completed for all beach accesses.**

	<b>Rank and Guiding Principles</b>	<b>(For City P&amp;R Dept. Only: Implementation Notes and Date Project Completed)</b>
13(a)	<b>Sequential Rank of <u>Short-Term</u> Recommendations.</b>	
13(b)	<b>BAC Guiding Principle(s) Supported by Short-Term Recommendations:</b>	
14(a)	<b>Sequential Rank of <u>Medium-Term</u> Recommendations:</b>	
14(b)	<b>BAC Guiding Principle(s) Supported by Medium-Term Recommendations:</b>	
15(a)	<b>Sequential Rank of <u>Long-Term</u> Recommendations:</b>	
15(b)	<b>BAC Guiding Principle(s) Supported by Long Term Recommendations:</b>	

Note to persons completing this form: Please hold the Alt Key and tap Return/Enter Key to insert a new line in a cell.



**City of Fernandina Beach Beach Access Evaluation**

**SECTION 1: Beach Access Data and Recommendations**

1	Date Form Completed:	3/2/2021
2	Beach Access Number and Location:	14N Cooper
3	Beach Access Type:	Walkthrough
4	Previous Construction/Repair/Walkover Removal Data:	
5	# of ADA/Non-ADA Parking Spaces:	20/0. Distributed parking on average for 20 at each of 10 accesses.
6	Galvanized-steel round guardrail present?	No
7	Ramp(s) Present, if so, Streetside, Beachside or both:	No
8	Distance between streetside sand and interior foredune in linear feet:	
9	Short-Term Recommendations: <i>Recommended for implementation between 1-2 years.</i>	1) City needs to install signage indicating this is an official COFB Beach Access. 2) Parking sign needed. 3) Install Posts/Ropes/Sandfencing to delineate current trail and angled at less than 42° after the foredune to slow future storm surge.
10	Medium-Term Recommendations: <i>Recommended for implementation between 3-4 years.</i>	
11	Long-Term Recommendations: <i>Recommended for implementation after 4 years (or possibly sooner) if warranted by future conditions.</i>	
12	Other beach access comments/observations including comments/observations provided by City Engineer and City P&R personnel.	C. George " 16N - 4N all need to be packaged together as one big project."

**SECTION 2: Short, Medium and Long-Term Recommendation Rankings and Guiding Principles. Do not fill in this section until Section 1-Beach Access Data and Recommendations have been completed for all beach accesses.**

	Rank and Guiding Principles	(For City P&R Dept. Only: Implementation Notes and Date Project Completed)
13(a) Sequential Rank of <u>Short-Term</u> Recommendations.		
13(b) BAC Guiding Principle(s) Supported by Short-Term Recommendations:		
14(a) Sequential Rank of <u>Medium-Term</u> Recommendations:		
14(b) BAC Guiding Principle(s) Supported by Medium-Term Recommendations:		
15(a) Sequential Rank of <u>Long-Term</u> Recommendations:		
15(b) BAC Guiding Principle(s) Supported by Long Term Recommendations:		

Note to persons completing this form: Please hold the Alt Key and tap Return/Enter Key to insert a new line in a cell.



**City of Fernandina Beach Beach Access Evaluation**

**SECTION 1: Beach Access Data and Recommendations**

1	<b>Date Form Completed:</b>	3/2/2021
2	<b>Beach Access Number and Location:</b>	12N North Beach Park
3	<b>Beach Access Type:</b>	Walkover
4	<b>Previous Construction/Repair/Walkover Removal Data:</b>	Constructed in 2002.
5	<b># of ADA/Non-ADA Parking Spaces:</b>	23/2. Parking on grass not included.
6	<b>Galvanized-steel round guardrail present?</b>	Yes
7	<b>Ramp(s) Present, if so, Streetside, Beachside or both:</b>	Yes
8	<b>Distance between streetside sand and interior foredune in linear feet:</b>	
9	<b>Short-Term Recommendations: <i>Recommended for implementation between 1-2 years.</i></b>	1) Posts and ropes should be installed to delineate current trail and angled at less than 42° after the foredune to slow future storm surge. 2) Sand fencing should be used to support the continued growth of new foredunes.
10	<b>Medium-Term Recommendations: <i>Recommended for implementation between 3-4 years.</i></b>	
11	<b>Long-Term Recommendations: <i>Recommended for implementation after 4 years (or possibly sooner) if warranted by future conditions.</i></b>	1.) Ocean side ramp should be extended over foredune (it now goes through the foredune). 2.) Add wheel chair overlook platform because walkover has height to overlook foredune, no need for mobymat, and already has ramps.
12	<b>Other beach access comments/observations including comments/observations provided by City Engineer and City P&amp;R personnel.</b>	C. George " 16N - 4N all need to be packaged together as one big project." Restore applied in 2011. Rated 3-Fair by Gillette in 2019. Ramps on both ends of walkover.

**SECTION 2: Short, Medium and Long-Term Recommendation Rankings and Guiding Principles. Do not fill in this section until Section 1-Beach Access Data and Recommendations have been completed for all beach accesses.**

	<b>Rank and Guiding Principles</b>	<b>(For City P&amp;R Dept. Only: Implementation Notes and Date Project Completed)</b>
13(a) <b>Sequential Rank of <u>Short-Term</u> Recommendations.</b>		
13(b) <b>BAC Guiding Principle(s) Supported by Short-Term Recommendations:</b>		
14(a) <b>Sequential Rank of <u>Medium-Term</u> Recommendations:</b>		
14(b) <b>BAC Guiding Principle(s) Supported by Medium-Term Recommendations:</b>		
15(a) <b>Sequential Rank of <u>Long-Term</u> Recommendations:</b>		
15(b) <b>BAC Guiding Principle(s) Supported by Long Term Recommendations:</b>		

Note to persons completing this form: Please hold the Alt Key and tap Return/Enter Key to insert a new line in a cell.

**City of Fernandina Beach Beach Access Evaluation**

**SECTION 1: Beach Access Data and Recommendations**

1	<b>Date Form Completed:</b>	3/2/2021
2	<b>Beach Access Number and Location:</b>	11.5N at Ocean Street
3	<b>Beach Access Type:</b>	Path only, forming some notches
4	<b>Previous Construction/Repair/Walkover Removal Data:</b>	Is a path only
5	<b># of ADA/Non-ADA Parking Spaces:</b>	20/0. Distributed parking for 20 at each of 10 accesses.
6	<b>Galvanized-steel round guardrail present?</b>	No
7	<b>Ramp(s) Present, if so, Streetside, Beachside or both:</b>	No
8	<b>Distance between streetside sand and interior foredune in linear feet:</b>	
9	<b>Short-Term Recommendations: <i>Recommended for implementation between 1-2 years.</i></b>	1) Beach access signage and posts/ropes/fencing should be installed to delineate current trail and angled at less than 42° after the foredune to slow future storm surge.
10	<b>Medium-Term Recommendations: <i>Recommended for implementation between 3-4 years.</i></b>	
11	<b>Long-Term Recommendations: <i>Recommended for implementation after 4 years (or possibly sooner) if warranted by future conditions.</i></b>	
12	<b>Other beach access comments/observations including comments/observations provided by City Engineer and City P&amp;R personnel.</b>	C. George " 16N - 4N all need to be packaged together as one big project."

**SECTION 2: Short, Medium and Long-Term Recommendation Rankings and Guiding Principles. Do not fill in this section until Section 1-Beach Access Data and Recommendations have been completed for all beach accesses.**

	<b>Rank and Guiding Principles</b>	<b>(For City P&amp;R Dept. Only: Implementation Notes and Date Project Completed)</b>
13(a)	<b>Sequential Rank of <u>Short-Term</u> Recommendations.</b>	
13(b)	<b>BAC Guiding Principle(s) Supported by Short-Term Recommendations:</b>	
14(a)	<b>Sequential Rank of <u>Medium-Term</u> Recommendations:</b>	
14(b)	<b>BAC Guiding Principle(s) Supported by Medium-Term Recommendations:</b>	
15(a)	<b>Sequential Rank of <u>Long-Term</u> Recommendations:</b>	
15(b)	<b>BAC Guiding Principle(s) Supported by Long Term Recommendations:</b>	

Note to persons completing this form: Please hold the Alt Key and tap Return/Enter Key to insert a new line in a cell.

**City of Fernandina Beach Beach Access Evaluation**

**SECTION 1: Beach Access Data and Recommendations**

1	<b>Date Form Completed:</b>	3/2/2021
2	<b>Beach Access Number and Location:</b>	11N - 8th Street and Ocean Avenue
3	<b>Beach Access Type:</b>	Walkover
4	<b>Previous Construction/Repair/Walkover Removal Data:</b>	Constructed in 2006
5	<b># of ADA/Non-ADA Parking Spaces:</b>	20/0. Distributed parking for 20 at each of 10 accesses.
6	<b>Galvanized-steel round guardrail present?</b>	No.
7	<b>Ramp(s) Present, if so, Streetside, Beachside or both:</b>	No
8	<b>Distance between streetside sand and interior foredune in linear feet:</b>	
9	<b>Short-Term Recommendations: <i>Recommended for implementation between 1-2 years.</i></b>	1) Posts/ropes/fencing to delineate current trail and angled at less than 42° after the foredune to slow future storm surge.
10	<b>Medium-Term Recommendations: <i>Recommended for implementation between 3-4 years.</i></b>	1) Steps should be replaced with ramps on both street and ocean side of walkover. 2) Ocean side ramp should extend over foredune and 3) at the end of the foredune ramp, posts and ropes to delineate current trail and angled at less than 42° after the foredune to slow future storm surge.
11	<b>Long-Term Recommendations: <i>Recommended for implementation after 4 years (or possibly sooner) if warranted by future conditions.</i></b>	
12	<b>Other beach access comments/observations including comments/observations provided by City Engineer and City P&amp;R personnel.</b>	C. George " 16N - 4N all need to be packaged together as one big constructon project."

**SECTION 2: Short, Medium and Long-Term Recommendation Rankings and Guiding Principles. Do not fill in this section until Section 1-Beach Access Data and Recommendations have been completed for all beach accesses.**

	<b>Rank and Guiding Principles</b>	<b>(For City P&amp;R Dept. Only: Implementation Notes and Date Project Completed)</b>
13(a)	<b>Sequential Rank of <u>Short-Term</u> Recommendations.</b>	
13(b)	<b>BAC Guiding Principle(s) Supported by Short-Term Recommendations:</b>	
14(a)	<b>Sequential Rank of <u>Medium-Term</u> Recommendations:</b>	
14(b)	<b>BAC Guiding Principle(s) Supported by Medium-Term Recommendations:</b>	
15(a)	<b>Sequential Rank of <u>Long-Term</u> Recommendations:</b>	
15(b)	<b>BAC Guiding Principle(s) Supported by Long Term Recommendations:</b>	

Note to persons completing this form: Please hold the Alt Key and tap Return/Enter Key to insert a new line in a cell.

**City of Fernandina Beach Beach Access Evaluation**

**SECTION 1: Beach Access Data and Recommendations**

1	<b>Date Form Completed:</b>	3/2/2021
2	<b>Beach Access Number and Location:</b>	10N - 7th Street and Ocean Avenue
3	<b>Beach Access Type:</b>	Walkover
4	<b>Previous Construction/Repair/Walkover Removal Data:</b>	2006
5	<b># of ADA/Non-ADA Parking Spaces:</b>	20/0. Distributed parking for 20 at each of 10 accesses.
6	<b>Galvanized-steel round guardrail present?</b>	No
7	<b>Ramp(s) Present, if so, Streetside, Beachside or both:</b>	No
8	<b>Distance between streetside sand and interior foredune in linear feet:</b>	
9	<b>Short-Term Recommendations: <i>Recommended for implementation between 1-32 years.</i></b>	1) posts and ropes should be installed to delineate current trail and angled at less than 42° after the foredune to slow future storm surge. 2) sand fencing should be used to support the continued growth of new foredunes.
10	<b>Medium-Term Recommendations: <i>Recommended for implementation between 3-4 years.</i></b>	1) steps should be replaced with ramps on both street and ocean side of walkover. 2) Ocean side ramp should extend over foredune and 3) at the end of the foredune ramp, posts and ropes to delineate current trail and angled at less than 42° after the foredune to slow future storm surge.
11	<b>Long-Term Recommendations: <i>Recommended for implementation after 4 years (or possibly sooner) if warranted by future conditions.</i></b>	
12	<b>Other beach access comments/observations including comments/observations provided by City Engineer and City P&amp;R personnel.</b>	C. George " 16N - 4N all need to be packaged together as one big project."

**SECTION 2: Short, Medium and Long-Term Recommendation Rankings and Guiding Principles. Do not fill in this section until Section 1-Beach Access Data and Recommendations have been completed for all beach accesses.**

	<b>Rank and Guiding Principles</b>	<b>(For City P&amp;R Dept. Only: Implementation Notes and Date Project Completed)</b>
13(a) <b>Sequential Rank of <u>Short-Term</u> Recommendations.</b>		
13(b) <b>BAC Guiding Principle(s) Supported by Short-Term Recommendations:</b>		
14(a) <b>Sequential Rank of <u>Medium-Term</u> Recommendations:</b>		
14(b) <b>BAC Guiding Principle(s) Supported by Medium-Term Recommendations:</b>		
15(a) <b>Sequential Rank of <u>Long-Term</u> Recommendations:</b>		
15(b) <b>BAC Guiding Principle(s) Supported by Long Term Recommendations:</b>		

Note to persons completing this form: Please hold the Alt Key and tap Return/Enter Key to insert a new line in a cell.

**City of Fernandina Beach Beach Access Evaluation**

**SECTION 1: Beach Access Data and Recommendations**

1	<b>Date Form Completed:</b>	2/24/2021
2	<b>Beach Access Number and Location:</b>	9N - 6th Street and Ocean Avenue
3	<b>Beach Access Type:</b>	Walkover
4	<b>Previous Construction/Repair/Walkover Removal Data:</b>	<b>Constructed in 2020</b>
5	<b># of ADA/Non-ADA Parking Spaces:</b>	20/0. Distributed parking for 20 at each of 10 accesses.
6	<b>Galvanized-steel round guardrail present?</b>	Yes
7	<b>Ramp(s) Present, if so, Streetside, Beachside or both:</b>	No
8	<b>Distance between streetside sand and interior foredune in linear feet:</b>	
9	<b>Short-Term Recommendations: <i>Recommended for implementation between 1-2 years.</i></b>	1) Extend metal handrails past last step on street and ocean side of walkover. Steps are very steep and foot traffic needs something to hang onto to access steps. 2) Install sign indicating beach walkover - only sign in on beach side. 3.) posts and ropes should be installed to delineate current trail and angled at less than 42° after the foredune to slow future storm surge. 4) sand fencing should be used to support the continued growth of new foredunes.
10	<b>Medium-Term Recommendations: <i>Recommended for implementation between 3-4 years.</i></b>	1) Steps should be replaced with ramps on both street and ocean side of walkover. 2) Ocean side ramp should extend over foredune and 3) At the end of the foredune ramp, posts and ropes to delineate current trail and angled at less than 42° after the foredune to slow future storm surge.
11	<b>Long-Term Recommendations: <i>Recommended for implementation after 4 years (or possibly sooner) if warranted by future conditions.</i></b>	
12	<b>Other beach access comments/observations including comments/observations provided by City Engineer and City P&amp;R personnel.</b>	C. George " 16N - 4N all need to be packaged together as one big project."

**SECTION 2: Short, Medium and Long-Term Recommendation Rankings and Guiding Principles. Do not fill in this section until Section 1-Beach Access Data and Recommendations have been completed for all beach accesses.**

	<b>Rank and Guiding Principles</b>	<b>(For City P&amp;R Dept. Only: Implementation Notes and Date Project Completed)</b>
13(a)	<b>Sequential Rank of <u>Short-Term</u> Recommendations.</b>	
13(b)	<b>BAC Guiding Principle(s) Supported by Short-Term Recommendations:</b>	
14(a)	<b>Sequential Rank of <u>Medium-Term</u> Recommendations:</b>	
14(b)	<b>BAC Guiding Principle(s) Supported by Medium-Term Recommendations:</b>	
15(a)	<b>Sequential Rank of <u>Long-Term</u> Recommendations:</b>	
15(b)	<b>BAC Guiding Principle(s) Supported by Long Term Recommendations:</b>	

Note to persons completing this form: Please hold the Alt Key and tap Return/Enter Key to insert a new line in a cell.

**City of Fernandina Beach Beach Access Evaluation**

**SECTION 1: Beach Access Data and Recommendations**

1	Date Form Completed:	3/2/2021
2	Beach Access Number and Location:	8N - 5th Street and Ocean Avenue
3	Beach Access Type:	Walkover
4	Previous Construction/Repair/Walkover Removal Data:	Constructed in 2020
5	# of ADA/Non-ADA Parking Spaces:	20/0. Distributed parking for 20 at each of 10 accesses.
6	Galvanized-steel round guardrail present?	Yes
7	Ramp(s) Present, if so, Streetside, Beachside or both:	No
8	Distance between streetside sand and interior foredune in linear feet:	
9	Short-Term Recommendations: <i>Recommended for implementation between 1-2 years.</i>	1) Post/Ropes/Fencing should be installed to delineate current trail and angled at less than 42° after the foredune to slow future storm surge. 2) sand fencing should be used to support the continued growth of new foredunes. 3.) Beach Access Sign needed on street side.
10	Medium-Term Recommendations: <i>Recommended for implementation between 3-4 years.</i>	
11	Long-Term Recommendations: <i>Recommended for implementation after 4 years (or possibly sooner) if warranted by future conditions.</i>	1) Since this is new construction, if warranted by future conditions, replace steps on street and ocean side with ramps.
12	Other beach access comments/observations including comments/observations provided by City Engineer and City P&R personnel.	C. George " 16N - 4N all need to be packaged together as one big project."

**SECTION 2: Short, Medium and Long-Term Recommendation Rankings and Guiding Principles. Do not fill in this section until Section 1-Beach Access Data and Recommendations have been completed for all beach accesses.**

	Rank and Guiding Principles	(For City P&R Dept. Only: Implementation Notes and Date Project Completed)
13(a) Sequential Rank of <u>Short-Term</u> Recommendations.		
13(b) BAC Guiding Principle(s) Supported by Short-Term Recommendations:		
14(a) Sequential Rank of <u>Medium-Term</u> Recommendations:		
14(b) BAC Guiding Principle(s) Supported by Medium-Term Recommendations:		
15(a) Sequential Rank of <u>Long-Term</u> Recommendations:		
15(b) BAC Guiding Principle(s) Supported by Long Term Recommendations:		

Note to persons completing this form: Please hold the Alt Key and tap Return/Enter Key to insert a new line in a cell.

**City of Fernandina Beach Beach Access Evaluation**

**SECTION 1: Beach Access Data and Recommendations**

1	Date Form Completed:	2/24/2021
2	Beach Access Number and Location:	7N - 4th Street and Ocean Avenue
3	Beach Access Type:	Walkover
4	Previous Construction/Repair/Walkover Removal Data:	Constructed in 2007
5	# of ADA/Non-ADA Parking Spaces:	20/0. Distributed parking for 20 at each of 10 accesses.
6	Galvanized-steel round guardrail present?	No
7	Ramp(s) Present, if so, Streetside, Beachside or both:	No
8	Distance between streetside sand and interior foredune in linear feet:	
9	Short-Term Recommendations: <i>Recommended for implementation between 1-2 years.</i>	1)Add grab rails that extend past the steps to assist users climbthese steep steps. Steps are very steep. 2) Posts/ropes/fencing should be installed to delineate current trail and angled at less than 42°after the foredune to slow future storm surge.
10	Medium-Term Recommendations: <i>Recommended for implementation between 3-4 years.</i>	<b>LBJ Move this to long-term</b> 1) heavily used beach access. 2) steps should be replaced with ramps on both street and ocean side of walkover. 3) Ocean side ramp should extend over foredune and 4) at the end of the foredune ramp, posts and ropes to delineate current trail and angled at less than 42°after the foredune to slow future storm surge.
11	Long-Term Recommendations: <i>Recommended for implementation after 4 years (or possibly sooner) if warranted by future conditions.</i>	
12	Other beach access comments/observations including comments/observations provided by City Engineer and City P&R personnel.	C. George " 16N - 4N all need to be packaged together as one big project." Short walkover

**SECTION 2: Short, Medium and Long-Term Recommendation Rankings and Guiding Principles. Do not fill in this section until Section 1-Beach Access Data and Recommendations have been completed for all beach accesses.**

	Rank and Guiding Principles	(For City P&R Dept. Only: Implementation Notes and Date Project Completed)
13(a) Sequential Rank of <u>Short-Term</u> Recommendations.		
13(b) BAC Guiding Principle(s) Supported by Short-Term Recommendations:		
14(a) Sequential Rank of <u>Medium-Term</u> Recommendations:		
14(b) BAC Guiding Principle(s) Supported by Medium-Term Recommendations:		
15(a) Sequential Rank of <u>Long-Term</u> Recommendations:		
15(b) BAC Guiding Principle(s) Supported by Long Term Recommendations:		

Note to persons completing this form: Please hold the Alt Key and tap Return/Enter Key to insert a new line in a cell.



**City of Fernandina Beach Beach Access Evaluation**

**SECTION 1: Beach Access Data and Recommendations**

1	<b>Date Form Completed:</b>	3/2/2021
2	<b>Beach Access Number and Location:</b>	6N - 3rd Street and Ocean Avenue
3	<b>Beach Access Type:</b>	Walkthrough, to be upgraded to Beach Walkover in 2021 with FDEP grant.
4	<b>Previous Construction/Repair/Walkover Removal Data:</b>	<b>Walkover removed in 2019</b>
5	<b># of ADA/Non-ADA Parking Spaces:</b>	20/0. Distributed parking for 20 at each of 10 accesses.
6	<b>Galvanized-steel round guardrail present?</b>	Will be.
7	<b>Ramp(s) Present, if so, Streetside, Beachside or both:</b>	Yes will have ramps
8	<b>Distance between streetside sand and interior foredune in linear feet:</b>	
9	<b>Short-Term Recommendations: <i>Recommended for implementation between 1-2 years.</i></b>	1)A grant has been secured for design and construction of a new walkover at this site. 2) Recommended design by BAC would be to have ramps at street side and ocean side and the walkover extend over and past the foredune. 3) At the end of the foredune ramp, posts/ropes and fencing should be installed to delineate current trail and angled at less than 42°after the foredune to slow future storm surge.
10	<b>Medium-Term Recommendations: <i>Recommended for implementation between 3-4 years.</i></b>	
11	<b>Long-Term Recommendations: <i>Recommended for implementation after 4 years (or possibly sooner) if warranted by future conditions.</i></b>	
12	<b>Other beach access comments/observations including comments/observations provided by City Engineer and City P&amp;R personnel.</b>	C. George " 16N - 4N all need to be packaged together as one big project."

**SECTION 2: Short, Medium and Long-Term Recommendation Rankings and Guiding Principles. Do not fill in this section until Section 1-Beach Access Data and Recommendations have been completed for all beach accesses.**

	<b>Rank and Guiding Principles</b>	<b>(For City P&amp;R Dept. Only: Implementation Notes and Date Project Completed)</b>
13(a)	<b>Sequential Rank of <u>Short-Term</u> Recommendations.</b>	
13(b)	<b>BAC Guiding Principle(s) Supported by Short-Term Recommendations:</b>	
14(a)	<b>Sequential Rank of <u>Medium-Term</u> Recommendations:</b>	
14(b)	<b>BAC Guiding Principle(s) Supported by Medium-Term Recommendations:</b>	
15(a)	<b>Sequential Rank of <u>Long-Term</u> Recommendations:</b>	
15(b)	<b>BAC Guiding Principle(s) Supported by Long Term Recommendations:</b>	

Note to persons completing this form: Please hold the Alt Key and tap Return/Enter Key to insert a new line in a cell.

**City of Fernandina Beach Beach Access Evaluation**

**SECTION 1: Beach Access Data and Recommendations**

1	<b>Date Form Completed:</b>	3/2/2021
2	<b>Beach Access Number and Location:</b>	5N - 2nd Street and Ocean Street
3	<b>Beach Access Type:</b>	Walkover
4	<b>Previous Construction/Repair/Walkover Removal Data:</b>	Constructed in 2007
5	<b># of ADA/Non-ADA Parking Spaces:</b>	20/0. Distributed parking for 20 at each of 10 accesses.
6	<b>Galvanized-steel round guardrail present?</b>	No
7	<b>Ramp(s) Present, if so, Streetside, Beachside or both:</b>	No
8	<b>Distance between streetside sand and interior foredune in linear feet:</b>	
9	<b>Short-Term Recommendations: <i>Recommended for implementation between 1-2 years.</i></b>	1) Steps are very steep. Add grab rails past last step on street and ocean side of walkover. Foot traffic needs something to hang onto to access steps. (with such steep steps, foot traffic goes around walkover with carts causing deep ruts in dunes; 2) Install posts/ropes/fencing to delineate current trail and angled at less than 42° after the foredune to slow future storm surge.
10	<b>Medium-Term Recommendations: <i>Recommended for implementation between 3-4 years.</i></b>	
11	<b>Long-Term Recommendations: <i>Recommended for implementation after 4 years (or possibly sooner) if warranted by future conditions.</i></b>	Steps should be replaced with ramps as time and funding allows.
12	<b>Other beach access comments/observations including comments/observations provided by City Engineer and City P&amp;R personnel.</b>	C. George " 16N - 4N all need to be packaged together as one big project."

**SECTION 2: Short, Medium and Long-Term Recommendation Rankings and Guiding Principles. Do not fill in this section until Section 1-Beach Access Data and Recommendations have been completed for all beach accesses.**

	<b>Rank and Guiding Principles</b>	<b>(For City P&amp;R Dept. Only: Implementation Notes and Date Project Completed)</b>
13(a)	<b>Sequential Rank of <u>Short-Term</u> Recommendations.</b>	
13(b)	<b>BAC Guiding Principle(s) Supported by Short-Term Recommendations:</b>	
14(a)	<b>Sequential Rank of <u>Medium-Term</u> Recommendations:</b>	
14(b)	<b>BAC Guiding Principle(s) Supported by Medium-Term Recommendations:</b>	
15(a)	<b>Sequential Rank of <u>Long-Term</u> Recommendations:</b>	
15(b)	<b>BAC Guiding Principle(s) Supported by Long Term Recommendations:</b>	

Note to persons completing this form: Please hold the Alt Key and tap Return/Enter Key to insert a new line in a cell.

**City of Fernandina Beach Beach Access Evaluation**

**SECTION 1: Beach Access Data and Recommendations**

1	<b>Date Form Completed:</b>	3/2/2021
2	<b>Beach Access Number and Location:</b>	4N 1st Street
3	<b>Beach Access Type:</b>	Walkthrough
4	<b>Previous Construction/Repair/Walkover Removal Data:</b>	<b>Walkover removed in 2019.</b>
5	<b># of ADA/Non-ADA Parking Spaces:</b>	20/0. Distributed parking for 20 at each of 10 accesses.
6	<b>Galvanized-steel round guardrail present?</b>	No
7	<b>Ramp(s) Present, if so, Streetside, Beachside or both:</b>	No
8	<b>Distance between streetside sand and interior foredune in linear feet:</b>	
9	<b>Short-Term Recommendations: <i>Recommended for implementation between 1-2 years.</i></b>	1) Dune is in poor shape. Posts/Ropes/Fencing should be installed to delineate current walkthrough trail and angled at less than 42° after the foredune to slow future storm surge.
10	<b>Medium-Term Recommendations: <i>Recommended for implementation between 3-4 years.</i></b>	A lot of property owners in this area with heavy traffic. Should be considered for replacement.
11	<b>Long-Term Recommendations: <i>Recommended for implementation after 4 years (or possibly sooner) if warranted by future conditions.</i></b>	A lot of property owners in this area with heavy traffic. Should be considered for replacement.
12	<b>Other beach access comments/observations including comments/observations provided by City Engineer and City P&amp;R personnel.</b>	C. George " 16N - 4N all need to be packaged together as one big project."

**SECTION 2: Short, Medium and Long-Term Recommendation Rankings and Guiding Principles. Do not fill in this section until Section 1-Beach Access Data and Recommendations have been completed for all beach accesses.**

	<b>Rank and Guiding Principles</b>	<b>(For City P&amp;R Dept. Only: Implementation Notes and Date Project Completed)</b>
13(a)	<b>Sequential Rank of <u>Short-Term</u> Recommendations.</b>	
13(b)	<b>BAC Guiding Principle(s) Supported by Short-Term Recommendations:</b>	
14(a)	<b>Sequential Rank of <u>Medium-Term</u> Recommendations:</b>	
14(b)	<b>BAC Guiding Principle(s) Supported by Medium-Term Recommendations:</b>	
15(a)	<b>Sequential Rank of <u>Long-Term</u> Recommendations:</b>	
15(b)	<b>BAC Guiding Principle(s) Supported by Long Term Recommendations:</b>	

Note to persons completing this form: Please hold the Alt Key and tap Return/Enter Key to insert a new line in a cell.

**City of Fernandina Beach Beach Access Evaluation**

**SECTION 1: Beach Access Data and Recommendations**

1	Date Form Completed:	3/2/2021
2	Beach Access Number and Location:	3N - Dolphin at Main Beach
3	Beach Access Type:	Authorized Vehicle Access Only
4	Previous Construction/Repair/Walkover Removal Data:	Walkthrough
5	# of ADA/Non-ADA Parking Spaces:	Review - there should be ADA and non-ADA parking available in adjacent parking lot
6	Galvanized-steel round guardrail present?	No
7	Ramp(s) Present, if so, Streetside, Beachside or both:	No
8	Distance between streetside sand and interior foredune in linear feet:	
9	Short-Term Recommendations: <i>Recommended for implementation between 1-2 years.</i>	1.) Signage advising limited access should be made more prominent. 2.) Gate closing access to public driving should be replaced. 3.) Increase crest of dune at access for non-hurricane storm/flooding events. 4.) Utilize post and rope to separate foot traffic and sunbathers from emergency vehicles access.
10	Medium-Term Recommendations: <i>Recommended for implementation between 3-4 years.</i>	
11	Long-Term Recommendations: <i>Recommended for implementation after 4 years (or possibly sooner) if warranted by future conditions.</i>	
12	Other beach access comments/observations including comments/observations provided by City Engineer and City P&R personnel.	Heavily used by public.

**SECTION 2: Short, Medium and Long-Term Recommendation Rankings and Guiding Principles. Do not fill in this section until Section 1-Beach Access Data and Recommendations have been completed for all beach accesses.**

	Rank and Guiding Principles	(For City P&R Dept. Only: Implementation Notes and Date Project Completed)
13(a) Sequential Rank of <u>Short-Term</u> Recommendations.		
13(b) BAC Guiding Principle(s) Supported by Short-Term Recommendations:		
14(a) Sequential Rank of <u>Medium-Term</u> Recommendations:		
14(b) BAC Guiding Principle(s) Supported by Medium-Term Recommendations:		
15(a) Sequential Rank of <u>Long-Term</u> Recommendations:		
15(b) BAC Guiding Principle(s) Supported by Long Term Recommendations:		

Note to persons completing this form: Please hold the Alt Key and tap Return/Enter Key to insert a new line in a cell.

City of Fernandina Beach Beach Access Evaluation

**SECTION 1: Beach Access Data and Recommendations**

1	Date Form Completed:	3/2/2021
2	Beach Access Number and Location:	Main Beach North
3	Beach Access Type:	Walkover
4	Previous Construction/Repair/Walkover Removal Data:	Replaced in 2020
5	# of ADA/Non-ADA Parking Spaces:	309/14
6	Galvanized-steel round guardrail present?	No
7	Ramp(s) Present, if so, Streetside, Beachside or both:	Yes
8	Distance between streetside sand and interior foredune in linear feet:	
9	Short-Term Recommendations: <i>Recommended for implementation between 1-2 years.</i>	Posts and Ropes, no sandfencing.
10	Medium-Term Recommendations: <i>Recommended for implementation between 3-4 years.</i>	1) Widen the sidewalk from this access north toward Dolphin. Allows for ease of wheelchair and foot traffic passing.
11	Long-Term Recommendations: <i>Recommended for implementation after 4 years (or possibly sooner) if warranted by future conditions.</i>	
12	Other beach access comments/observations including comments/observations provided by City Engineer and City P&R personnel.	Closest to Dolphin Parking lot.

**SECTION 2: Short, Medium and Long-Term Recommendation Rankings and Guiding Principles. Do not fill in this section until Section 1-Beach Access Data and Recommendations have been completed for all beach accesses.**

	Rank and Guiding Principles	(For City P&R Dept. Only: Implementation Notes and Date Project Completed)
13(a) Sequential Rank of <u>Short-Term</u> Recommendations.		
13(b) BAC Guiding Principle(s) Supported by Short-Term Recommendations:		
14(a) Sequential Rank of <u>Medium-Term</u> Recommendations:		
14(b) BAC Guiding Principle(s) Supported by Medium-Term Recommendations:		
15(a) Sequential Rank of <u>Long-Term</u> Recommendations:		
15(b) BAC Guiding Principle(s) Supported by Long Term Recommendations:		

Note to persons completing this form: Please hold the Alt Key and tap Return/Enter Key to insert a new line in a cell.

**City of Fernandina Beach Beach Access Evaluation**

**SECTION 1: Beach Access Data and Recommendations**

1	Date Form Completed:	3/2/2021
2	Beach Access Number and Location:	Main Beach Central
3	Beach Access Type:	Walkover
4	Previous Construction/Repair/Walkover Removal Data:	
5	# of ADA/Non-ADA Parking Spaces:	309/14 parking provided for Accesses 3N and 1N Dolphin Main Beach Mobi-Mat and Pavillion
6	Galvanized-steel round guardrail present?	No
7	Ramp(s) Present, if so, Streetside, Beachside or both:	Yes
8	Distance between streetside sand and interior foredune in linear feet:	
9	Short-Term Recommendations: <i>Recommended for implementation between 1-2 years.</i>	1.) Continue use of mobi-mats for ADA access to beach.
10	Medium-Term Recommendations: <i>Recommended for implementation between 3-4 years.</i>	
11	Long-Term Recommendations: <i>Recommended for implementation after 4 years (or possibly sooner) if warranted by future conditions.</i>	
12	Other beach access comments/observations including comments/observations provided by City Engineer and City P&R personnel.	Access has Moby Mat.

**SECTION 2: Short, Medium and Long-Term Recommendation Rankings and Guiding Principles. Do not fill in this section until Section 1-Beach Access Data and Recommendations have been completed for all beach accesses.**

	Rank and Guiding Principles	(For City P&R Dept. Only: Implementation Notes and Date Project Completed)
13(a) Sequential Rank of <u>Short-Term</u> Recommendations.		
13(b) BAC Guiding Principle(s) Supported by Short-Term Recommendations:		
14(a) Sequential Rank of <u>Medium-Term</u> Recommendations:		
14(b) BAC Guiding Principle(s) Supported by Medium-Term Recommendations:		
15(a) Sequential Rank of <u>Long-Term</u> Recommendations:		
15(b) BAC Guiding Principle(s) Supported by Long Term Recommendations:		

Note to persons completing this form: Please hold the Alt Key and tap Return/Enter Key to insert a new line in a cell.

**City of Fernandina Beach Beach Access Evaluation**

**SECTION 1: Beach Access Data and Recommendations**

1	Date Form Completed:	3/2/2021
2	Beach Access Number and Location:	Main Beach South
3	Beach Access Type:	Walkover
4	Previous Construction/Repair/Walkover Removal Data:	Note: see if these 4 accesses are labelled correctly. Not sure but think Moby Mat is the next walkover south of 3N. If so, need to change tabs at bottom.
5	# of ADA/Non-ADA Parking Spaces:	309/14
6	Galvanized-steel round guardrail present?	No
7	Ramp(s) Present, if so, Streetside, Beachside or both:	Yes
8	Distance between streetside sand and interior foredune in linear feet:	
9	Short-Term Recommendations: <i>Recommended for implementation between 1-2 years.</i>	
10	Medium-Term Recommendations: <i>Recommended for implementation between 3-4 years.</i>	
11	Long-Term Recommendations: <i>Recommended for implementation after 4 years (or possibly sooner) if warranted by future conditions.</i>	
12	Other beach access comments/observations including comments/observations provided by City Engineer and City P&R personnel.	Walkover located right across from Putt-putt

**SECTION 2: Short, Medium and Long-Term Recommendation Rankings and Guiding Principles. Do not fill in this section until Section 1-Beach Access Data and Recommendations have been completed for all beach accesses.**

	Rank and Guiding Principles	(For City P&R Dept. Only: Implementation Notes and Date Project Completed)
13(a) Sequential Rank of <u>Short-Term</u> Recommendations.		
13(b) BAC Guiding Principle(s) Supported by Short-Term Recommendations:		
14(a) Sequential Rank of <u>Medium-Term</u> Recommendations:		
14(b) BAC Guiding Principle(s) Supported by Medium-Term Recommendations:		
15(a) Sequential Rank of <u>Long-Term</u> Recommendations:		
15(b) BAC Guiding Principle(s) Supported by Long Term Recommendations:		

Note to persons completing this form: Please hold the Alt Key and tap Return/Enter Key to insert a new line in a cell.



City of Fernandina Beach Beach Access Evaluation

**SECTION 1: Beach Access Data and Recommendations**

1	Date Form Completed:	3/2/2021
2	Beach Access Number and Location:	Dolphin MB Parking
3	Beach Access Type:	Walkthrough
4	Previous Construction/Repair/Walkover Removal Data:	Note: I think this is extra. Take a second look at accesses at Main Beach.
5	# of ADA/Non-ADA Parking Spaces:	309/14
6	Galvanized-steel round guardrail present?	No
7	Ramp(s) Present, if so, Streetside, Beachside or both:	Yes
8	Distance between streetside sand and interior foredune in linear feet:	
9	Short-Term Recommendations: <i>Recommended for implementation between 1-2 years.</i>	
10	Medium-Term Recommendations: <i>Recommended for implementation between 3-4 years.</i>	
11	Long-Term Recommendations: <i>Recommended for implementation after 4 years (or possibly sooner) if warranted by future conditions.</i>	
12	Other beach access comments/observations including comments/observations provided by City Engineer and City P&R personnel.	A wide walkthrough

**SECTION 2: Short, Medium and Long-Term Recommendation Rankings and Guiding Principles. Do not fill in this section until Section 1-Beach Access Data and Recommendations have been completed for all beach accesses.**

	Rank and Guiding Principles	(For City P&R Dept. Only: Implementation Notes and Date Project Completed)
13(a) Sequential Rank of <u>Short-Term</u> Recommendations.		
13(b) BAC Guiding Principle(s) Supported by Short-Term Recommendations:		
14(a) Sequential Rank of <u>Medium-Term</u> Recommendations:		
14(b) BAC Guiding Principle(s) Supported by Medium-Term Recommendations:		
15(a) Sequential Rank of <u>Long-Term</u> Recommendations:		
15(b) BAC Guiding Principle(s) Supported by Long Term Recommendations:		

Note to persons completing this form: Please hold the Alt Key and tap Return/Enter Key to insert a new line in a cell.

**City of Fernandina Beach Beach Access Evaluation**

**SECTION 1: Beach Access Data and Recommendations**

1	Date Form Completed:	3/2/2021
2	Beach Access Number and Location:	1 Nassau
3	Beach Access Type:	Walkthrough
4	Previous Construction/Repair/Walkover Removal Data:	
5	# of ADA/Non-ADA Parking Spaces:	8/0. R. Prager: Parking dominated by Elizabeth Point in traffic.
6	Galvanized-steel round guardrail present?	No
7	Ramp(s) Present, if so, Streetside, Beachside or both:	No
8	Distance between streetside sand and interior foredune in linear feet:	
9	Short-Term Recommendations: <i>Recommended for implementation between 1-2 years.</i>	2) Pavement patching should be done near end of asphalt and where walkthrough begins and drainage issues on west side should be looked at. 2) Posts/Ropes and sandfencing to should be installed to delineate current trail and angled at less than 42° after the foredune to slow future storm surge.
10	Medium-Term Recommendations: <i>Recommended for implementation between 3-4 years.</i>	
11	Long-Term Recommendations: <i>Recommended for implementation after 4 years (or possibly sooner) if warranted by future conditions.</i>	
12	Other beach access comments/observations including comments/observations provided by City Engineer and City P&R personnel.	1) Pipes on public beach used to hold umbrellas (perhaps Elizabeth Point) are not removed each day, creating safety issues as they could be run over or stepped on as sand moves over and around pipes. Parks & Rec should look at. [BAC remarks: West side holds a lot of water. BAC had consensus on leaving this one as a walkthrough. R. Prager thinks the eastern edge of this wanders for a few feet onto private land. Recommended for Ropes/Poles/Sand fences.]

**SECTION 2: Short, Medium and Long-Term Recommendation Rankings and Guiding Principles. Do not fill in this section until Section 1-Beach Access Data and Recommendations have been completed for all beach accesses.**

	Rank and Guiding Principles	(For City P&R Dept. Only: Implementation Notes and Date Project Completed)
13(a)	Sequential Rank of <u>Short-Term</u> Recommendations.	
13(b)	BAC Guiding Principle(s) Supported by Short-Term Recommendations:	
14(a)	Sequential Rank of <u>Medium-Term</u> Recommendations:	
14(b)	BAC Guiding Principle(s) Supported by Medium-Term Recommendations:	
15(a)	Sequential Rank of <u>Long-Term</u> Recommendations:	
15(b)	BAC Guiding Principle(s) Supported by Long Term Recommendations:	

Note to persons completing this form: Please hold the Alt Key and tap Return/Enter Key to insert a new line in a cell.

**City of Fernandina Beach Beach Access Evaluation**

**SECTION 1: Beach Access Data and Recommendations**

1	Date Form Completed:	3/2/2021
2	Beach Access Number and Location:	2 Amelia
3	Beach Access Type:	Walkover
4	Previous Construction/Repair/Walkover Removal Data:	New, constructed in 2020 with composite decking.
5	# of ADA/Non-ADA Parking Spaces:	12/0
6	Galvanized-steel round guardrail present?	Yes
7	Ramp(s) Present, if so, Streetside, Beachside or both:	No
8	Distance between streetside sand and interior foredune in linear feet:	
9	Short-Term Recommendations: <i>Recommended for implementation between 1-2 years.</i>	1.) Post/Ropes/Sand fencing recommended, but not over foredune, as is a low-use walkover.
10	Medium-Term Recommendations: <i>Recommended for implementation between 3-4 years.</i>	
11	Long-Term Recommendations: <i>Recommended for implementation after 4 years (or possibly sooner) if warranted by future conditions.</i>	1) Recommend steps should be replaced with ramps on both street and ocean side of walkover. 2) Ocean side ramp should extend over foredune and 3) at the end of the foredune ramp, posts and ropes to delineate current trail and angled at less than 42° after the foredune to slow future storm surge.
12	Other beach access comments/observations including comments/observations provided by City Engineer and City P&R personnel.	[BAC remarks: Point was made that 2 Amelia "has so few people that use it, that it doesn't need to extend over foredune."]

**SECTION 2: Short, Medium and Long-Term Recommendation Rankings and Guiding Principles. Do not fill in this section until Section 1-Beach Access Data and Recommendations have been completed for all beach accesses.**

	Rank and Guiding Principles	(For City P&R Dept. Only: Implementation Notes and Date Project Completed)
13(a) Sequential Rank of <u>Short-Term</u> Recommendations.		
13(b) BAC Guiding Principle(s) Supported by Short-Term Recommendations:		
14(a) Sequential Rank of <u>Medium-Term</u> Recommendations:		
14(b) BAC Guiding Principle(s) Supported by Medium-Term Recommendations:		
15(a) Sequential Rank of <u>Long-Term</u> Recommendations:		
15(b) BAC Guiding Principle(s) Supported by Long Term Recommendations:		

Note to persons completing this form: Please hold the Alt Key and tap Return/Enter Key to insert a new line in a cell.

**City of Fernandina Beach Beach Access Evaluation**

**SECTION 1: Beach Access Data and Recommendations**

1	<b>Date Form Completed:</b>	3/2/2021
2	<b>Beach Access Number and Location:</b>	5 Alabama
3	<b>Beach Access Type:</b>	Walkover.
4	<b>Previous Construction/Repair/Walkover Removal Data:</b>	New, constructed in 2019 with composite wood.
5	<b># of ADA/Non-ADA Parking Spaces:</b>	8/0
6	<b>Galvanized-steel round guardrail present?</b>	Yes
7	<b>Ramp(s) Present, if so, Streetside, Beachside or both:</b>	No
8	<b>Distance between streetside sand and interior foredune in linear feet:</b>	
9	<b>Short-Term Recommendations: <i>Recommended for implementation between 1-2 years.</i></b>	1) At the end of the existing foredune trail, posts ropes should be installed to delineate current trail and angled at less than 42° after the foredune to slow future storm surge. 2) Needs sign for beach parking across street.
10	<b>Medium-Term Recommendations: <i>Recommended for implementation between 3-4 years.</i></b>	
11	<b>Long-Term Recommendations: <i>Recommended for implementation after 4 years (or possibly sooner) if warranted by future conditions.</i></b>	1) BAC recommends ramps instead of stairs at street side and ocean side of walkover and that the ocean side ramp extend over the foredune. 2) At the end of the future foredune ramp, posts and ropes should be installed to delineate current trail and angled at less than 42° after the foredune to slow future storm surge. 2) sand fencing should be used to support the continued growth of new foredunes
12	<b>Other beach access comments/observations including comments/observations provided by City Engineer and City P&amp;R personnel.</b>	[BAC Notes: Is a relatively low-use walkover. J. Pitcherelle is fixing sharp protrusion on handrail. Comment was made that "this is a beautiful walkover, ramp should be extended parallel to foredune. Nice to add ramps on both ends." Mac stated that, per FDEP, that "any manmade structure should not extend more than 10 feet past vegetation."] Has sand-fencing with sea oats newly-installed.

**SECTION 2: Short, Medium and Long-Term Recommendation Rankings and Guiding Principles. Do not fill in this section until Section 1-Beach Access Data and Recommendations have been completed for all beach accesses.**

	<b>Rank and Guiding Principles</b>	<b>(For City P&amp;R Dept. Only: Implementation Notes and Date Project Completed)</b>
13(a)	<b>Sequential Rank of <u>Short-Term</u> Recommendations.</b>	
13(b)	<b>BAC Guiding Principle(s) Supported by Short-Term Recommendations:</b>	
14(a)	<b>Sequential Rank of <u>Medium-Term</u> Recommendations:</b>	
14(b)	<b>BAC Guiding Principle(s) Supported by Medium-Term Recommendations:</b>	
15(a)	<b>Sequential Rank of <u>Long-Term</u> Recommendations:</b>	
15(b)	<b>BAC Guiding Principle(s) Supported by Long Term Recommendations:</b>	

Note to persons completing this form: Please hold the Alt Key and tap Return/Enter Key to insert a new line in a cell.

**City of Fernandina Beach Beach Access Evaluation**

**SECTION 1: Beach Access Data and Recommendations**

1	Date Form Completed:	3/2/2021
2	Beach Access Number and Location:	6 New York
3	Beach Access Type:	Walkthrough
4	Previous Construction/Repair/Walkover Removal Data:	
5	# of ADA/Non-ADA Parking Spaces:	8/0
6	Galvanized-steel round guardrail present?	No
7	Ramp(s) Present, if so, Streetside, Beachside or both:	No
8	Distance between streetside sand and interior foredune in linear feet:	
9	Short-Term Recommendations: <i>Recommended for implementation between 1-2 years.</i>	1) Looks good as a walkthrough. Seems to have high use from neighborhood. Has sea oats and sand fencing.
10	Medium-Term Recommendations: <i>Recommended for implementation between 3-4 years.</i>	
11	Long-Term Recommendations: <i>Recommended for implementation after 4 years (or possibly sooner) if warranted by future conditions.</i>	Could be recommended for future walkover. Timeline ???.
12	Other beach access comments/observations including comments/observations provided by City Engineer and City P&R personnel.	[BAC remarks: Lots of traffic from Ocean View development. Dune system is not healthy. Could be future candidate, although low priority, for a walkover at some point.]

**SECTION 2: Short, Medium and Long-Term Recommendation Rankings and Guiding Principles. Do not fill in this section until Section 1-Beach Access Data and Recommendations have been completed for all beach accesses.**

	Rank and Guiding Principles	(For City P&R Dept. Only: Implementation Notes and Date Project Completed)
13(a)	Sequential Rank of <u>Short-Term</u> Recommendations.	
13(b)	BAC Guiding Principle(s) Supported by Short-Term Recommendations:	
14(a)	Sequential Rank of <u>Medium-Term</u> Recommendations:	
14(b)	BAC Guiding Principle(s) Supported by Medium-Term Recommendations:	
15(a)	Sequential Rank of <u>Long-Term</u> Recommendations:	
15(b)	BAC Guiding Principle(s) Supported by Long Term Recommendations:	

Note to persons completing this form: Please hold the Alt Key and tap Return/Enter Key to insert a new line in a cell.

**City of Fernandina Beach Beach Access Evaluation**

**SECTION 1: Beach Access Data and Recommendations**

1	Date Form Completed:	3/2/2021
2	Beach Access Number and Location:	8 Maryland
3	Beach Access Type:	Walkthrough.
4	Previous Construction/Repair/Walkover Removal Data:	
5	# of ADA/Non-ADA Parking Spaces:	10/0 (please verify)
6	Galvanized-steel round guardrail present?	No
7	Ramp(s) Present, if so, Streetside, Beachside or both:	No
8	Distance between streetside sand and interior foredune in linear feet:	
9	Short-Term Recommendations: <i>Recommended for implementation between 1-2 years.</i>	1) Looks good as a walkthrough. Seems to have high use from neighborhood. 2) At the end of the existing foredune trail, posts and ropes should be installed to delineate current trail and angled at less than 42° after the foredune to slow future storm surge. 3) sand fencing should be used to support the continued growth of new foredunes.
10	Medium-Term Recommendations: <i>Recommended for implementation between 3-4 years.</i>	
11	Long-Term Recommendations: <i>Recommended for implementation after 4 years (or possibly sooner) if warranted by future conditions.</i>	
12	Other beach access comments/observations including comments/observations provided by City Engineer and City P&R personnel.	[BAC Notes: R. Prager thinks this is a good candidate for a walkover. Has one step, Charlie said "the independent treads did not protect dunes."

**SECTION 2: Short, Medium and Long-Term Recommendation Rankings and Guiding Principles. Do not fill in this section until Section 1-Beach Access Data and Recommendations have been completed for all beach accesses.**

	Rank and Guiding Principles	(For City P&R Dept. Only: Implementation Notes and Date Project Completed)
13(a) Sequential Rank of <u>Short-Term</u> Recommendations.		
13(b) BAC Guiding Principle(s) Supported by Short-Term Recommendations:		
14(a) Sequential Rank of <u>Medium-Term</u> Recommendations:		
14(b) BAC Guiding Principle(s) Supported by Medium-Term Recommendations:		
15(a) Sequential Rank of <u>Long-Term</u> Recommendations:		
15(b) BAC Guiding Principle(s) Supported by Long Term Recommendations:		

Note to persons completing this form: Please hold the Alt Key and tap Return/Enter Key to insert a new line in a cell.

**City of Fernandina Beach Beach Access Evaluation**

**SECTION 1: Beach Access Data and Recommendations**

1	Date Form Completed:	3/2/2021
2	Beach Access Number and Location:	9 Jasmine
3	Beach Access Type:	Walkover.
4	Previous Construction/Repair/Walkover Removal Data:	
5	# of ADA/Non-ADA Parking Spaces:	10/0
6	Galvanized-steel round guardrail present?	Yes
7	Ramp(s) Present, if so, Streetside, Beachside or both:	No
8	Distance between streetside sand and interior foredune in linear feet:	
9	Short-Term Recommendations: <i>Recommended for implementation between 1-2 years.</i>	1) Looks good as a walkthrough. Seems to have very high use from neighborhood. Has had great dune growth over the past 15 years. Should not be replaced ever with walkthrough. 2) At the end of the existing foredune trail, posts and ropes should be installed to delineate current trail and angled at less than 42° after the foredune to slow future storm surge. 3) sand fencing should be used to
10	Medium-Term Recommendations: <i>Recommended for implementation between 3-4 years.</i>	1.) All repairs required to ensure a long-term life span of this walkover should be budgeted for and performed as it is a short distance access and walkover removal would cause significant resiliency issues. As the walkover approaches the end of its lifespan, replacement costs for a walkover with extended ramps on both sides should be budgeted to ensure the continued availability of this walkover;
11	Long-Term Recommendations: <i>Recommended for implementation after 4 years (or possibly sooner) if warranted by future conditions.</i>	1.) All repairs required to ensure a long-term life span of this important high-use walkover should be budgeted for and performed. As the walkover approaches the end of its lifespan, replacement costs for a walkover with extended ramps on both sides should be budgeted to ensure the continued availability of this walkover;
12	Other beach access comments/observations including comments/observations provided by City Engineer and City P&R personnel.	C. George recommends this for removal, dune is overtaking walkover. R. Prager recommends removing walkover or building retaining wall. [BAC notes: Charlie says if a dune takes over a walkway, that is a good thing. Mac says leave this one alone. Robert said this is a good one for a ramp on the street-side. Bryn measured this and advised that if the City brought it out 3 feet, a ramp could possibly be installed, but agreed to leave it in the short-term. Mac says removal would cause flooding issues.

**SECTION 2: Short, Medium and Long-Term Recommendation Rankings and Guiding Principles. Do not fill in this section until Section 1-Beach Access Data and Recommendations have been completed for all beach accesses.**

	Rank and Guiding Principles	(For City P&R Dept. Only: Implementation Notes and Date Project Completed)
13(a)	Sequential Rank of <u>Short-Term</u> Recommendations.	
13(b)	BAC Guiding Principle(s) Supported by Short-Term Recommendations:	
14(a)	Sequential Rank of <u>Medium-Term</u> Recommendations:	
14(b)	BAC Guiding Principle(s) Supported by Medium-Term Recommendations:	
15(a)	Sequential Rank of <u>Long-Term</u> Recommendations:	
15(b)	BAC Guiding Principle(s) Supported by Long Term Recommendations:	

Note to persons completing this form: Please hold the Alt Key and tap Return/Enter Key to insert a new line in a cell.



**City of Fernandina Beach Beach Access Evaluation**

**SECTION 1: Beach Access Data and Recommendations**

1	Date Form Completed:	3/2/2021
2	Beach Access Number and Location:	10 Wisconsin
3	Beach Access Type:	Walkover
4	Previous Construction/Repair/Walkover Removal Data:	
5	# of ADA/Non-ADA Parking Spaces:	0/0
6	Galvanized-steel round guardrail present?	No
7	Ramp(s) Present, if so, Streetside, Beachside or both:	No. (There is a non-inclined boardwalk)
8	Distance between streetside sand and interior foredune in linear feet:	
9	Short-Term Recommendations: <i>Recommended for implementation between 1-2 years.</i>	1) Dune system not as well developed. Keep stairs over existing foredune for as long as possible to support foredune development. Seems to have low use based on location to neighborhoods. 2) At the end of the existing foredune, posts and ropes should be installed to delineate current trail and angled at less than 42° after the foredune to slow future storm surge. 3) Sand fencing should be used to support the continued growth of new foredunes.
10	Medium-Term Recommendations: <i>Recommended for implementation between 3-4 years.</i>	1) Long lead in from street not necessary, can be removed.
11	Long-Term Recommendations: <i>Recommended for implementation after 4 years (or possibly sooner) if warranted by future conditions.</i>	1) Continue maintenance of walkover, as this walkover is important because it is helping protect a recovering sand dune system. If future conditions change, this walkover could be removed with a post and rope deliniation for the walkthrough trail.
12	Other beach access comments/observations including comments/observations provided by City Engineer and City P&R personnel.	Rated Poor by Gillette in 2019. J. Pitcheralle says it should be removed. [BAC Notes: BAC points out it's a low-use beach access and is "could be viable for removal". Has stairs that go down to path. Not a great dune. Charlie asked the question of whether this still needed to be a walkover. Robert said to prevent theft of ropes, they need to be knotted on both sides (of posts?) If removed, it would push 10-12 nearby households to next walkover. There is ROW access across the street.

**SECTION 2: Short, Medium and Long-Term Recommendation Rankings and Guiding Principles. Do not fill in this section until Section 1-Beach Access Data and Recommendations have been completed for all beach accesses.**

	Rank and Guiding Principles	(For City P&R Dept. Only: Implementation Notes and Date Project Completed)
13(a) Sequential Rank of <u>Short-Term</u> Recommendations.		
13(b) BAC Guiding Principle(s) Supported by Short-Term Recommendations:		
14(a) Sequential Rank of <u>Medium-Term</u> Recommendations:		
14(b) BAC Guiding Principle(s) Supported by Medium-Term Recommendations:		
15(a) Sequential Rank of <u>Long-Term</u> Recommendations:		
15(b) BAC Guiding Principle(s) Supported by Long Term Recommendations:		

Note to persons completing this form: Please hold the Alt Key and tap Return/Enter Key to insert a new line in a cell.

**City of Fernandina Beach Beach Access Evaluation**

**SECTION 1: Beach Access Data and Recommendations**

1	Date Form Completed:	3/2/2021
2	Beach Access Number and Location:	10S Kentucky
3	Beach Access Type:	Walkthrough
4	Previous Construction/Repair/Walkover Removal Data:	
5	# of ADA/Non-ADA Parking Spaces:	0/0 Access has parking across the street
6	Galvanized-steel round guardrail present?	No
7	Ramp(s) Present, if so, Streetside, Beachside or both:	No
8	Distance between streetside sand and interior foredune in linear feet:	
9	Short-Term Recommendations: <i>Recommended for implementation between 1-2 years.</i>	1) City beach side sign not in front of access. 2) Across street of access, parking signs need to be re-aligned facing S. Fletcher. 3) At the end of the existing foredune trail, posts and ropes should be installed to delineate current trail and angled at less than 42° after the foredune to slow future storm surge. 4) sand fencing should be used to support the continued growth of new foredunes.
10	Medium-Term Recommendations: <i>Recommended for implementation between 3-4 years.</i>	
11	Long-Term Recommendations: <i>Recommended for implementation after 4 years (or possibly sooner) if warranted by future conditions.</i>	
12	Other beach access comments/observations including comments/observations provided by City Engineer and City P&R personnel.	[BAC Notes: Low back dune and low foredune. Sign is not in front of where the walkthrough is located, needs to be moved. Needs more ropes. Parking could be put in across the street. There is a sign that points to parking.]

**SECTION 2: Short, Medium and Long-Term Recommendation Rankings and Guiding Principles. Do not fill in this section until Section 1-Beach Access Data and Recommendations have been completed for all beach accesses.**

	Rank and Guiding Principles	(For City P&R Dept. Only: Implementation Notes and Date Project Completed)
13(a)	Sequential Rank of <u>Short-Term</u> Recommendations.	
13(b)	BAC Guiding Principle(s) Supported by Short-Term Recommendations:	
14(a)	Sequential Rank of <u>Medium-Term</u> Recommendations:	
14(b)	BAC Guiding Principle(s) Supported by Medium-Term Recommendations:	
15(a)	Sequential Rank of <u>Long-Term</u> Recommendations:	
15(b)	BAC Guiding Principle(s) Supported by Long Term Recommendations:	

Note to persons completing this form: Please hold the Alt Key and tap Return/Enter Key to insert a new line in a cell.

**City of Fernandina Beach Beach Access Evaluation**

**SECTION 1: Beach Access Data and Recommendations**

1	<b>Date Form Completed:</b>	3/2/2021
2	<b>Beach Access Number and Location:</b>	11 Colorado
3	<b>Beach Access Type:</b>	Walkthrough
4	<b>Previous Construction/Repair/Walkover Removal Data:</b>	
5	<b># of ADA/Non-ADA Parking Spaces:</b>	0/0. No parking available.
6	<b>Galvanized-steel round guardrail present?</b>	No
7	<b>Ramp(s) Present, if so, Streetside, Beachside or both:</b>	No
8	<b>Distance between streetside sand and interior foredune in linear feet:</b>	
9	<b>Short-Term Recommendations: <i>Recommended for implementation between 1-2 years.</i></b>	1) Has a mature and well developed dune system. 2) City P&R needs to look at utilities drainage issues at roadway. 3) Needs landscaping management to keep access accessible to foot traffic. 4) At the end of the existing foredune trail, posts and ropes should be installed to delineate current trail and angled at less than 42° after the foredune to slow future storm surge. 5) Sand fencing should be used to support the continued growth of new foredunes.
10	<b>Medium-Term Recommendations: <i>Recommended for implementation between 3-4 years.</i></b>	
11	<b>Long-Term Recommendations: <i>Recommended for implementation after 4 years (or possibly sooner) if warranted by future conditions.</i></b>	
12	<b>Other beach access comments/observations including comments/observations provided by City Engineer and City P&amp;R personnel.</b>	[BAC Notes: Walkthrough has trees planted on the ROW, it is a 10-foot ROW, needs clearing. Drain gets covered from mulch from neighbor's plant clippings. City Utility needs to look at drainage issues.]

**SECTION 2: Short, Medium and Long-Term Recommendation Rankings and Guiding Principles. Do not fill in this section until Section 1-Beach Access Data and Recommendations have been completed for all beach accesses.**

	<b>Rank and Guiding Principles</b>	<b>(For City P&amp;R Dept. Only: Implementation Notes and Date Project Completed)</b>
13(a)	<b>Sequential Rank of <u>Short-Term</u> Recommendations.</b>	
13(b)	<b>BAC Guiding Principle(s) Supported by Short-Term Recommendations:</b>	
14(a)	<b>Sequential Rank of <u>Medium-Term</u> Recommendations:</b>	
14(b)	<b>BAC Guiding Principle(s) Supported by Medium-Term Recommendations:</b>	
15(a)	<b>Sequential Rank of <u>Long-Term</u> Recommendations:</b>	
15(b)	<b>BAC Guiding Principle(s) Supported by Long Term Recommendations:</b>	

Note to persons completing this form: Please hold the Alt Key and tap Return/Enter Key to insert a new line in a cell.

**City of Fernandina Beach Beach Access Evaluation**

**SECTION 1: Beach Access Data and Recommendations**

1	Date Form Completed:	2/24/2021
2	Beach Access Number and Location:	13 Jefferson
3	Beach Access Type:	Walkover
4	Previous Construction/Repair/Walkover Removal Data:	
5	# of ADA/Non-ADA Parking Spaces:	12/0. Access parking on Jefferson.
6	Galvanized-steel round guardrail present?	No
7	Ramp(s) Present, if so, Streetside, Beachside or both:	Yes
8	Distance between streetside sand and interior foredune in linear feet:	
9	Short-Term Recommendations: <i>Recommended for implementation between 1-2 years.</i>	1) Healthy, well-developed dune system. Seems to have low use from neighborhood. 2) BAC recommends installing guard rails on downside of steps toward beach. 3) At the end of the existing foredune trail, posts and ropes should be installed to delineate current trail and angled at less than 42° after the foredune to slow future storm surge. 4) Sand fencing should be used to support the continued growth of new foredunes.
10	Medium-Term Recommendations: <i>Recommended for implementation between 3-4 years.</i>	
11	Long-Term Recommendations: <i>Recommended for implementation after 4 years (or possibly sooner) if warranted by future conditions.</i>	
12	Other beach access comments/observations including comments/observations provided by City Engineer and City P&R personnel.	[BAC Notes: Low use. Ropes and angled walkways and handrails desired, walkthrough has a lot of dog walkers. ROW and Beach Access don't seem to line up, needs checking.

**SECTION 2: Short, Medium and Long-Term Recommendation Rankings and Guiding Principles. Do not fill in this section until Section 1-Beach Access Data and Recommendations have been completed for all beach accesses.**

	Rank and Guiding Principles	(For City P&R Dept. Only: Implementation Notes and Date Project Completed)
13(a) Sequential Rank of <u>Short-Term</u> Recommendations.		
13(b) BAC Guiding Principle(s) Supported by Short-Term Recommendations:		
14(a) Sequential Rank of <u>Medium-Term</u> Recommendations:		
14(b) BAC Guiding Principle(s) Supported by Medium-Term Recommendations:		
15(a) Sequential Rank of <u>Long-Term</u> Recommendations:		
15(b) BAC Guiding Principle(s) Supported by Long Term Recommendations:		

Note to persons completing this form: Please hold the Alt Key and tap Return/Enter Key to insert a new line in a cell.

**City of Fernandina Beach Beach Access Evaluation**

**SECTION 1: Beach Access Data and Recommendations**

1	Date Form Completed:	2/24/2021
2	Beach Access Number and Location:	14
3	Beach Access Type:	Walkthrough
4	Previous Construction/Repair/Walkover Removal Data:	
5	# of ADA/Non-ADA Parking Spaces:	0/0 No parking available
6	Guard rails Present?:	Galvanized-steel round guardrail present?
7	Ramp(s) Present, if so, Streetside, Beachside or both:	No
8	Distance between streetside sand and interior foredune in linear feet:	
9	Short-Term Recommendations: <i>Recommended for implementation between 1-2 years.</i>	1) Need to verify GIS map where City property line and access don't seem to line up. 2) Access seems to have low use due to location and neighborhood. 3) Needs landscaping management to keep access accessible to foot traffic. 4) At the end of the existing foredune trail, posts and ropes should be installed to delineate current trail and angled at less than 42° after the foredune to slow future storm surge. 5) Sand fencing should be used to support the continued growth of new foredunes.
10	Medium-Term Recommendations: <i>Recommended for implementation between 3-4 years.</i>	
11	Long-Term Recommendations: <i>Recommended for implementation after 4 years (or possibly sooner) if warranted by future conditions.</i>	
12	Other beach access comments/observations including comments/observations provided by City Engineer and City P&R personnel.	[BAC Notes: Not high volume, no parking. Oceanside needs protection.]

**SECTION 2: Short, Medium and Long-Term Recommendation Rankings and Guiding Principles. Do not fill in this section until Section 1-Beach Access Data and Recommendations have been completed for all beach accesses.**

	Rank and Guiding Principles	(For City P&R Dept. Only: Implementation Notes and Date Project Completed)
13(a)	Sequential Rank of <u>Short-Term</u> Recommendations.	
13(b)	BAC Guiding Principle(s) Supported by Short-Term Recommendations:	
14(a)	Sequential Rank of <u>Medium-Term</u> Recommendations:	
14(b)	BAC Guiding Principle(s) Supported by Medium-Term Recommendations:	
15(a)	Sequential Rank of <u>Long-Term</u> Recommendations:	
15(b)	BAC Guiding Principle(s) Supported by Long Term Recommendations:	

Note to persons completing this form: Please hold the Alt Key and tap Return/Enter Key to insert a new line in a cell.

**City of Fernandina Beach Beach Access Evaluation**

**SECTION 1: Beach Access Data and Recommendations**

1	Date Form Completed:	2/24/2021
2	Beach Access Number and Location:	15 Madison
3	Beach Access Type:	Walkthrough
4	Previous Construction/Repair/Walkover Removal Data:	
5	# of ADA/Non-ADA Parking Spaces:	0/0 No parking available at this access.
6	Galvanized-steel round guardrail present?	No
7	Ramp(s) Present, if so, Streetside, Beachside or both:	No
8	Distance between streetside sand and interior foredune in linear feet:	
9	Short-Term Recommendations: <i>Recommended for implementation between 1-2 years.</i>	1) Walkover trail looks good. Appears to have high use from Rachel neighborhood. 3) At the end of the existing foredune trail, posts and ropes should be installed to delineate current trail and angled at less than 42° after the foredune to slow future storm surge. 4) sand fencing should be used to support the continued growth of new foredunes.
10	Medium-Term Recommendations: <i>Recommended for implementation between 3-4 years.</i>	
11	Long-Term Recommendations: <i>Recommended for implementation after 4 years (or possibly sooner) if warranted by future conditions.</i>	
12	Other beach access comments/observations including comments/observations provided by City Engineer and City P&R personnel.	[BAC Notes: Leave alone, only needs post and ropes. However, City vehicles should not be going near dunes. Concern that beach vehicles (Beach Rangers?) are driving too close to developing foredune system.]

**SECTION 2: Short, Medium and Long-Term Recommendation Rankings and Guiding Principles. Do not fill in this section until Section 1-Beach Access Data and Recommendations have been completed for all beach accesses.**

	Rank and Guiding Principles	(For City P&R Dept. Only: Implementation Notes and Date Project Completed)
13(a)	Sequential Rank of <u>Short-Term</u> Recommendations.	
13(b)	BAC Guiding Principle(s) Supported by Short-Term Recommendations:	
14(a)	Sequential Rank of <u>Medium-Term</u> Recommendations:	
14(b)	BAC Guiding Principle(s) Supported by Medium-Term Recommendations:	
15(a)	Sequential Rank of <u>Long-Term</u> Recommendations:	
15(b)	BAC Guiding Principle(s) Supported by Long Term Recommendations:	

Note to persons completing this form: Please hold the Alt Key and tap Return/Enter Key to insert a new line in a cell.

**City of Fernandina Beach Beach Access Evaluation**

**SECTION 1: Beach Access Data and Recommendations**

1	<b>Date Form Completed:</b>	2/24/2021
2	<b>Beach Access Number and Location:</b>	16 Cleveland
3	<b>Beach Access Type:</b>	Walkthrough
4	<b>Previous Construction/Repair/Walkover Removal Data:</b>	
5	<b># of ADA/Non-ADA Parking Spaces:</b>	0/0 Parking is available across street on Cleveland.
6	<b>Handrails Present?:</b>	No
7	<b>Ramp(s) Present, if so, Streetside, Beachside or both:</b>	No
8	<b>Distance between streetside sand and interior foredune in linear feet:</b>	
9	<b>Short-Term Recommendations: <i>Recommended for implementation between 1-2 years.</i></b>	1) This high-use beach access has a very healthy dune system. 2) At the end of the existing foredune trail, posts and ropes should be installed to delineate current trail and angled at less than 42° after the foredune to slow future storm surge. 3) Sand fencing should be used to support the continued growth of new foredunes.
10	<b>Medium-Term Recommendations: <i>Recommended for implementation between 3-4 years.</i></b>	1.) Because this is a high-use walkover, budgeting for replacement should occur near end of current walkover's life cycle.
11	<b>Long-Term Recommendations: <i>Recommended for implementation after 4 years (or possibly sooner) if warranted by future conditions.</i></b>	Possible candidate for future walkover.
12	<b>Other beach access comments/observations including comments/observations provided by City Engineer and City P&amp;R personnel.</b>	[BAC Notes: Gets a lot of use. Cleveland connects to 1st Ave neighborhood where there is a lot of public parking. Parking is located across the street on Cleveland and 1st Ave. Has a good dune, good candidate for Posts and Ropes.

**SECTION 2: Short, Medium and Long-Term Recommendation Rankings and Guiding Principles. Do not fill in this section until Section 1-Beach Access Data and Recommendations have been completed for all beach accesses.**

	<b>Rank and Guiding Principles</b>	<b>(For City P&amp;R Dept. Only: Implementation Notes and Date Project Completed)</b>
13(a) <b>Sequential Rank of <u>Short-Term</u> Recommendations.</b>		
13(b) <b>BAC Guiding Principle(s) Supported by Short-Term Recommendations:</b>		
14(a) <b>Sequential Rank of <u>Medium-Term</u> Recommendations:</b>		
14(b) <b>BAC Guiding Principle(s) Supported by Medium-Term Recommendations:</b>		
15(a) <b>Sequential Rank of <u>Long-Term</u> Recommendations:</b>		
15(b) <b>BAC Guiding Principle(s) Supported by Long Term Recommendations:</b>		

Note to persons completing this form: Please hold the Alt Key and tap Return/Enter Key to insert a new line in a cell.



City of Fernandina Beach Beach Access Evaluation

**SECTION 1: Beach Access Data and Recommendations**

1	Date Form Completed:	2/24/2021
2	Beach Access Number and Location:	17
3	Beach Access Type:	Walkthrough
4	Previous Construction/Repair/Walkover Removal Data:	
5	# of ADA/Non-ADA Parking Spaces:	0/0
6	Galvanized-steel round guardrail present?	No
7	Ramp(s) Present, if so, Streetside, Beachside or both:	No
8	Distance between streetside sand and interior foredune in linear feet:	
9	Short-Term Recommendations: <i>Recommended for implementation between 1-2 years.</i>	1)Note for Parks & Rec: has old matting and paving stones that could be removed. 2) Not a high use access. 3) At the end of the existing foredune trail, posts and ropes should be installed to delineate current trail and angled at less than 42°after the foredune to slow future storm surge. 2) sand fencing should be used to support the continued growth of new foredunes.
10	Medium-Term Recommendations: <i>Recommended for implementation between 3-4 years.</i>	
11	Long-Term Recommendations: <i>Recommended for implementation after 4 years (or possibly sooner) if warranted by future conditions.</i>	
12	Other beach access comments/observations including comments/observations provided by City Engineer and City P&R personnel.	[BAC Notes: Add posts & ropes, or remove.]

**SECTION 2: Short, Medium and Long-Term Recommendation Rankings and Guiding Principles. Do not fill in this section until Section 1-Beach Access Data and Recommendations have been completed for all beach accesses.**

	Rank and Guiding Principles	(For City P&R Dept. Only: Implementation Notes and Date Project Completed)
13(a) Sequential Rank of <u>Short-Term</u> Recommendations.		
13(b) BAC Guiding Principle(s) Supported by Short-Term Recommendations:		
14(a) Sequential Rank of <u>Medium-Term</u> Recommendations:		
14(b) BAC Guiding Principle(s) Supported by Medium-Term Recommendations:		
15(a) Sequential Rank of <u>Long-Term</u> Recommendations:		
15(b) BAC Guiding Principle(s) Supported by Long Term Recommendations:		

Note to persons completing this form: Please hold the Alt Key and tap Return/Enter Key to insert a new line in a cell.

**City of Fernandina Beach Beach Access Evaluation**

**SECTION 1: Beach Access Data and Recommendations**

1	<b>Date Form Completed:</b>	2/24/2021
2	<b>Beach Access Number and Location:</b>	18 Roosevelt
3	<b>Beach Access Type:</b>	Walkover
4	<b>Previous Construction/Repair/Walkover Removal Data:</b>	Renovated in 2010. Construction unknown.
5	<b># of ADA/Non-ADA Parking Spaces:</b>	0/0
6	<b>Galvanized-steel round guardrail present?</b>	No
7	<b>Ramp(s) Present, if so, Streetside, Beachside or both:</b>	Yes
8	<b>Distance between streetside sand and interior foredune in linear feet:</b>	
9	<b>Short-Term Recommendations: <i>Recommended for implementation between 1-2 years.</i></b>	1) This is a heavily-used beach access, which is aged, although it was renovated in 2010. 2) Complete Repairs already planned by P&R, which include replacement of rotting top surface of deck to accomplish extension of the walkover life. 3) Guard Rails should be added. 3) At the end of the existing foredune trail, posts and ropes should be installed to delineate current trail and angled at less than 42° after the foredune to slow future storm surge. 4) Sand fencing should be used to support the continued growth of new foredunes.
10	<b>Medium-Term Recommendations: <i>Recommended for implementation between 3-4 years.</i></b>	
11	<b>Long-Term Recommendations: <i>Recommended for implementation after 4 years (or possibly sooner) if warranted by future conditions.</i></b>	
12	<b>Other beach access comments/observations including comments/observations provided by City Engineer and City P&amp;R personnel.</b>	[BAC Notes: Homeowner has permission to put in pavers, which is a good thing, and he intends to add more, to the benefit of the beach access.]

**SECTION 2: Short, Medium and Long-Term Recommendation Rankings and Guiding Principles. Do not fill in this section until Section 1-Beach Access Data and Recommendations have been completed for all beach accesses.**

	<b>Rank and Guiding Principles</b>	<b>(For City P&amp;R Dept. Only: Implementation Notes and Date Project Completed)</b>
13(a)	<b>Sequential Rank of <u>Short-Term</u> Recommendations.</b>	
13(b)	<b>BAC Guiding Principle(s) Supported by Short-Term Recommendations:</b>	
14(a)	<b>Sequential Rank of <u>Medium-Term</u> Recommendations:</b>	
14(b)	<b>BAC Guiding Principle(s) Supported by Medium-Term Recommendations:</b>	
15(a)	<b>Sequential Rank of <u>Long-Term</u> Recommendations:</b>	
15(b)	<b>BAC Guiding Principle(s) Supported by Long Term Recommendations:</b>	

Note to persons completing this form: Please hold the Alt Key and tap Return/Enter Key to insert a new line in a cell.

**City of Fernandina Beach Beach Access Evaluation**

**SECTION 1: Beach Access Data and Recommendations**

1	Date Form Completed:	2/24/2021
2	Beach Access Number and Location:	19
3	Beach Access Type:	Walkthrough
4	Previous Construction/Repair/Walkover Removal Data:	
5	# of ADA/Non-ADA Parking Spaces:	0/0
6	Galvanized-steel round guardrail present?	No
7	Ramp(s) Present, if so, Streetside, Beachside or both:	No
8	Distance between streetside sand and interior foredune in linear feet:	
9	Short-Term Recommendations: <i>Recommended for implementation between 1-2 years.</i>	1) Need City sign to indicate legal beach access on ocean side. 2) P&R need to do landscape maintenance to clear bushes and fallen sandfencing for ease of foot traffic. 3) low foot traffic usage 3.) At the end of the existing foredune trail, posts and ropes should be installed to delineate current trail and angled at less than 42° after the foredune to slow future storm surge. 4.) sand fencing should be used to support the continued growth of new foredunes.
10	Medium-Term Recommendations: <i>Recommended for implementation between 3-4 years.</i>	Maintain natural-state at low cost to maintain access's limited purposes.
11	Long-Term Recommendations: <i>Recommended for implementation after 4 years (or possibly sooner) if warranted by future conditions.</i>	
12	Other beach access comments/observations including comments/observations provided by City Engineer and City P&R personnel.	[BAC Notes: This access does not have a street name. Has no parking at all and low usage. No sign posts on beachside.]

**SECTION 2: Short, Medium and Long-Term Recommendation Rankings and Guiding Principles. Do not fill in this section until Section 1-Beach Access Data and Recommendations have been completed for all beach accesses.**

	Rank and Guiding Principles	(For City P&R Dept. Only: Implementation Notes and Date Project Completed)
13(a)	Sequential Rank of <u>Short-Term</u> Recommendations.	
13(b)	BAC Guiding Principle(s) Supported by Short-Term Recommendations:	
14(a)	Sequential Rank of <u>Medium-Term</u> Recommendations:	
14(b)	BAC Guiding Principle(s) Supported by Medium-Term Recommendations:	
15(a)	Sequential Rank of <u>Long-Term</u> Recommendations:	
15(b)	BAC Guiding Principle(s) Supported by Long Term Recommendations:	

Note to persons completing this form: Please hold the Alt Key and tap Return/Enter Key to insert a new line in a cell.

**City of Fernandina Beach Beach Access Evaluation**

**SECTION 1: Beach Access Data and Recommendations**

1	Date Form Completed:	3/2/2021
2	Beach Access Number and Location:	Sadler (Sliders)
3	Beach Access Type:	Walkthrough
4	Previous Construction/Repair/Walkover Removal Data:	
5	Galvanized-steel round guardrail present?	30/2
6	Handrails Present?:	No
7	Ramp(s) Present, if so, Streetside, Beachside or both:	No
8	Distance between streetside sand and interior foredune in linear feet:	
9	Short-Term Recommendations: <i>Recommended for implementation between 1-2 years.</i>	Install improvements that secure safe pedestrian access.
10	Medium-Term Recommendations: <i>Recommended for implementation between 3-4 years.</i>	
11	Long-Term Recommendations: <i>Recommended for implementation after 4 years (or possibly sooner) if warranted by future conditions.</i>	
12	Other beach access comments/observations including comments/observations provided by City Engineer and City P&R personnel.	Is a public access to on-beach parking. Also has pedestrian traffic.

**SECTION 2: Short, Medium and Long-Term Recommendation Rankings and Guiding Principles. Do not fill in this section until Section 1-Beach Access Data and Recommendations have been completed for all beach accesses.**

	Rank and Guiding Principles	(For City P&R Dept. Only: Implementation Notes and Date Project Completed)
13(a) Sequential Rank of <u>Short-Term</u> Recommendations.		
13(b) BAC Guiding Principle(s) Supported by Short-Term Recommendations:		
14(a) Sequential Rank of <u>Medium-Term</u> Recommendations:		
14(b) BAC Guiding Principle(s) Supported by Medium-Term Recommendations:		
15(a) Sequential Rank of <u>Long-Term</u> Recommendations:		
15(b) BAC Guiding Principle(s) Supported by Long Term Recommendations:		

Note to persons completing this form: Please hold the Alt Key and tap Return/Enter Key to insert a new line in a cell.

**City of Fernandina Beach Beach Access Evaluation**

**SECTION 1: Beach Access Data and Recommendations**

1	<b>Date Form Completed:</b>	3/2/2021
2	<b>Beach Access Number and Location:</b>	20 Seaside Park
3	<b>Beach Access Type:</b>	Walkover
4	<b>Previous Construction/Repair/Walkover Removal Data:</b>	Constructed in 2003. Restore applied in 2011.
5	<b># of ADA/Non-ADA Parking Spaces:</b>	30/2
6	<b>Galvanized-steel round guardrail present?</b>	Yes
7	<b>Ramp(s) Present, if so, Streetside, Beachside or both:</b>	Yes
8	<b>Distance between streetside sand and interior foredune in linear feet:</b>	
9	<b>Short-Term Recommendations: <i>Recommended for implementation between 1-2 years.</i></b>	Remove food showers on wood given that showers are located in bathroom and footshowers are damaging the boardwalk.
10	<b>Medium-Term Recommendations: <i>Recommended for implementation between 3-4 years.</i></b>	Add ADA-accessible observation deck.
11	<b>Long-Term Recommendations: <i>Recommended for implementation after 4 years (or possibly sooner) if warranted by future conditions.</i></b>	
12	<b>Other beach access comments/observations including comments/observations provided by City Engineer and City P&amp;R personnel.</b>	P&R: Boardwalk in poor condition. Structural issues on east side. [BAC Notes: J. Pitcherille would like removal of showers on wood given showers located in bathroom.

**SECTION 2: Short, Medium and Long-Term Recommendation Rankings and Guiding Principles. Do not fill in this section until Section 1-Beach Access Data and Recommendations have been completed for all beach accesses.**

	<b>Rank and Guiding Principles</b>	<b>(For City P&amp;R Dept. Only: Implementation Notes and Date Project Completed)</b>
13(a) <b>Sequential Rank of <u>Short-Term</u> Recommendations.</b>		
13(b) <b>BAC Guiding Principle(s) Supported by Short-Term Recommendations:</b>		
14(a) <b>Sequential Rank of <u>Medium-Term</u> Recommendations:</b>		
14(b) <b>BAC Guiding Principle(s) Supported by Medium-Term Recommendations:</b>		
15(a) <b>Sequential Rank of <u>Long-Term</u> Recommendations:</b>		
15(b) <b>BAC Guiding Principle(s) Supported by Long Term Recommendations:</b>		

Note to persons completing this form: Please hold the Alt Key and tap Return/Enter Key to insert a new line in a cell.

**City of Fernandina Beach Beach Access Evaluation**

**SECTION 1: Beach Access Data and Recommendations**

1	<b>Date Form Completed:</b>	3/2/2021
2	<b>Beach Access Number and Location:</b>	21 John Robas
3	<b>Beach Access Type:</b>	Walkthrough
4	<b>Previous Construction/Repair/Walkover Removal Data:</b>	Removed in 2010
5	<b># of ADA/Non-ADA Parking Spaces:</b>	0/0. This is a State ROW but P & R maintains it.
6	<b>Galvanized-steel round guardrail present?</b>	No
7	<b>Ramp(s) Present, if so, Streetside, Beachside or both:</b>	No
8	<b>Distance between streetside sand and interior foredune in linear feet:</b>	
9	<b>Short-Term Recommendations: <i>Recommended for implementation between 1-2 years.</i></b>	1) Add City signage and clear excess shrubbery. 2) Given high usage from residents on First Ave and Amelia Landing, it should maintained as a Walkthrough. 3)At the end of the existing foredune trail, posts and ropes should be installed to delineate current trail and angled at less than 42°after the foredune to slow future storm surge. 4) sand fencing should be used to support the continued growth of new foredunes.
10	<b>Medium-Term Recommendations: <i>Recommended for implementation between 3-4 years.</i></b>	
11	<b>Long-Term Recommendations: <i>Recommended for implementation after 5 years (or possibly sooner) if warranted by future conditions.</i></b>	
12	<b>Other beach access comments/observations including comments/observations provided by City Engineer and City P&amp;R personnel.</b>	

**SECTION 2: Short, Medium and Long-Term Recommendation Rankings and Guiding Principles. Do not fill in this section until Section 1-Beach Access Data and Recommendations have been completed for all beach accesses.**

	<b>Rank and Guiding Principles</b>	<b>(For City P&amp;R Dept. Only: Implementation Notes and Date Project Completed)</b>
13(a)	<b>Sequential Rank of <u>Short-Term</u> Recommendations.</b>	
13(b)	<b>BAC Guiding Principle(s) Supported by Short-Term Recommendations:</b>	
14(a)	<b>Sequential Rank of <u>Medium-Term</u> Recommendations:</b>	
14(b)	<b>BAC Guiding Principle(s) Supported by Medium-Term Recommendations:</b>	
15(a)	<b>Sequential Rank of <u>Long-Term</u> Recommendations:</b>	
15(b)	<b>BAC Guiding Principle(s) Supported by Long Term Recommendations:</b>	

Note to persons completing this form: Please hold the Alt Key and tap Return/Enter Key to insert a new line in a cell.

City of Fernandina Beach Beach Access Evaluation

**SECTION 1: Beach Access Data and Recommendations**

1	Date Form Completed:	3/2/2021
2	Beach Access Number and Location:	21S B Street
3	Beach Access Type:	Walkthrough
4	Previous Construction/Repair/Walkover Removal Data:	
5	# of ADA/Non-ADA Parking Spaces:	0/0
6	Galvanized-steel round guardrail present?	No
7	Ramp(s) Present, if so, Streetside, Beachside or both:	No
8	Distance between streetside sand and interior foredune in linear feet:	
9	Short-Term Recommendations: <i>Recommended for implementation between 1-2 years.</i>	1) High-use in Summer after Seaside fills up. 2) Posts and ropes should be installed to delineate current trail and angled at less than 42° after the foredune to slow future storm surge. 3) Sand fencing should be used to support the continued growth of new foredunes. 4) Has a root which presents risk of tripping which should be removed.
10	Medium-Term Recommendations: <i>Recommended for implementation between 3-4 years.</i>	
11	Long-Term Recommendations: <i>Recommended for implementation after 4 years (or possibly sooner) if warranted by future conditions.</i>	
12	Other beach access comments/observations including comments/observations provided by City Engineer and City P&R personnel.	1) There is parking available on B Street

**SECTION 2: Short, Medium and Long-Term Recommendation Rankings and Guiding Principles. Do not fill in this section until Section 1-Beach Access Data and Recommendations have been completed for all beach accesses.**

	Rank and Guiding Principles	(For City P&R Dept. Only: Implementation Notes and Date Project Completed)
13(a) Sequential Rank of <u>Short-Term</u> Recommendations.		
13(b) BAC Guiding Principle(s) Supported by Short-Term Recommendations:		
14(a) Sequential Rank of <u>Medium-Term</u> Recommendations:		
14(b) BAC Guiding Principle(s) Supported by Medium-Term Recommendations:		
15(a) Sequential Rank of <u>Long-Term</u> Recommendations:		
15(b) BAC Guiding Principle(s) Supported by Long Term Recommendations:		

Note to persons completing this form: Please hold the Alt Key and tap Return/Enter Key to insert a new line in a cell.



**City of Fernandina Beach Beach Access Evaluation**

**SECTION 1: Beach Access Data and Recommendations**

1	Date Form Completed:	2/24/2021
2	Beach Access Number and Location:	22 C Street
3	Beach Access Type:	Walkover
4	Previous Construction/Repair/Walkover Removal Data:	
5	# of ADA/Non-ADA Parking Spaces:	0/0
6	Galvanized-steel round guardrail present?	No
7	Ramp(s) Present, if so, Streetside, Beachside or both:	Yes
8	Distance between streetside sand and interior foredune in linear feet:	
9	Short-Term Recommendations: <i>Recommended for implementation between 1-2 years.</i>	1) This is a high-use walkover from neighborhood 2) At the end of the existing foredune trail, posts and ropes should be installed to delineate current trail and angled at less than 42° after the foredune to slow future storm surge. 3) sand fencing should be used to support the continued growth of new foredunes. 4) The street side manhole stormdrain cover needs attention (some asphalt around it?)
10	Medium-Term Recommendations: <i>Recommended for implementation between 3-4 years.</i>	
11	Long-Term Recommendations: <i>Recommended for implementation after 4 years (or possibly sooner) if warranted by future conditions.</i>	1) Angled marked paths through foredunes should be installed at a time that makes sense (after storms?).
12	Other beach access comments/observations including comments/observations provided by City Engineer and City P&R personnel.	1) There is parking available on C Street.

**SECTION 2: Short, Medium and Long-Term Recommendation Rankings and Guiding Principles. Do not fill in this section until Section 1-Beach Access Data and Recommendations have been completed for all beach accesses.**

	Rank and Guiding Principles	(For City P&R Dept. Only: Implementation Notes and Date Project Completed)
13(a) Sequential Rank of <u>Short-Term</u> Recommendations.		
13(b) BAC Guiding Principle(s) Supported by Short-Term Recommendations:		
14(a) Sequential Rank of <u>Medium-Term</u> Recommendations:		
14(b) BAC Guiding Principle(s) Supported by Medium-Term Recommendations:		
15(a) Sequential Rank of <u>Long-Term</u> Recommendations:		
15(b) BAC Guiding Principle(s) Supported by Long Term Recommendations:		

Note to persons completing this form: Please hold the Alt Key and tap Return/Enter Key to insert a new line in a cell.

**City of Fernandina Beach Beach Access Evaluation**

**SECTION 1: Beach Access Data and Recommendations**

1	Date Form Completed:	2/24/2021
2	Beach Access Number and Location:	23 D Street
3	Beach Access Type:	Walkover
4	Previous Construction/Repair/Walkover Removal Data:	
5	# of ADA/Non-ADA Parking Spaces:	0/0
6	Galvanized-steel round guardrail present?	No
7	Ramp(s) Present, if so, Streetside, Beachside or both:	Yes
8	Distance between streetside sand and interior foredune in linear feet:	
9	Short-Term Recommendations: <i>Recommended for implementation between 1-2 years.</i>	1) This is a long and wide (7 foot) walkover that presents high-costs to maintain. 2) Gaps at street-side and beach side walkover should be filled; 3.) At the end of the existing foredune trail, posts and ropes should be installed to delineate current trail and angled at less than 42° after the foredune to slow future storm surge. 3) Sand fencing should be used to support the continued growth of new foredunes.
10	Medium-Term Recommendations: <i>Recommended for implementation between 3-4 years.</i>	
11	Long-Term Recommendations: <i>Recommended for implementation after 4 years (or possibly sooner) if warranted by future conditions.</i>	
12	Other beach access comments/observations including comments/observations provided by City Engineer and City P&R personnel.	

**SECTION 2: Short, Medium and Long-Term Recommendation Rankings and Guiding Principles. Do not fill in this section until Section 1-Beach Access Data and Recommendations have been completed for all beach accesses.**

	Rank and Guiding Principles	(For City P&R Dept. Only: Implementation Notes and Date Project Completed)
13(a) Sequential Rank of <u>Short-Term</u> Recommendations.		
13(b) BAC Guiding Principle(s) Supported by Short-Term Recommendations:		
14(a) Sequential Rank of <u>Medium-Term</u> Recommendations:		
14(b) BAC Guiding Principle(s) Supported by Medium-Term Recommendations:		
15(a) Sequential Rank of <u>Long-Term</u> Recommendations:		
15(b) BAC Guiding Principle(s) Supported by Long Term Recommendations:		

Note to persons completing this form: Please hold the Alt Key and tap Return/Enter Key to insert a new line in a cell.

**City of Fernandina Beach Beach Access Evaluation**

**SECTION 1: Beach Access Data and Recommendations**

1	<b>Date Form Completed:</b>	2/24/2021
2	<b>Beach Access Number and Location:</b>	24 Askins
3	<b>Beach Access Type:</b>	Walkover
4	<b>Previous Construction/Repair/Walkover Removal Data:</b>	Restore applied in 2011.
5	<b># of ADA/Non-ADA Parking Spaces:</b>	0/0
6	<b>Galvanized-steel round guardrail present?</b>	Yes
7	<b>Ramp(s) Present, if so, Streetside, Beachside or both:</b>	Yes
8	<b>Distance between streetside sand and interior foredune in linear feet:</b>	
9	<b>Short-Term Recommendations: <i>Recommended for implementation between 1-2 years.</i></b>	1) Heavily used access from neighborhood, especially Forest Ridge. 2) At the end of the existing foredune trail, posts and ropes should be installed to delineate current trail and angled at less than 42° after the foredune to slow future storm surge. 3) sand fencing should be used to support the continued growth of new foredunes.
10	<b>Medium-Term Recommendations: <i>Recommended for implementation between 3-4 years.</i></b>	1) For special project, P&R to look at opportunities to straighten walkover. Walkover steps are very steep. BAC recommends adding grab rails or replacing steps with ramps. See long term recommendations.
11	<b>Long-Term Recommendations: <i>Recommended for implementation after 4 years (or possibly sooner) if warranted by future conditions.</i></b>	
12	<b>Other beach access comments/observations including comments/observations provided by City Engineer and City P&amp;R personnel.</b>	P&R: Ground level deck needs replacing. Hardware needs replacing. Street-side needs redesigning. [BAC Notes: J. Pitcherelle would like to remove this walkover, citing that it is hard to maintain. Railings may be needed on one side due to steepness of ocean-side stairs. R. Prager says this access has high dunes which are very healthy, and recommends that this walkover be extended over foredunes, with ramps on both ends. However, walkover is too steep for wheelchairs, a condition which can't be changed.

**SECTION 2: Short, Medium and Long-Term Recommendation Rankings and Guiding Principles. Do not fill in this section until Section 1-Beach Access Data and Recommendations have been completed for all beach accesses.**

	<b>Rank and Guiding Principles</b>	<b>(For City P&amp;R Dept. Only: Implementation Notes and Date Project Completed)</b>
13(a)	<b>Sequential Rank of <u>Short-Term</u> Recommendations.</b>	
13(b)	<b>BAC Guiding Principle(s) Supported by Short-Term Recommendations:</b>	
14(a)	<b>Sequential Rank of <u>Medium-Term</u> Recommendations:</b>	
14(b)	<b>BAC Guiding Principle(s) Supported by Medium-Term Recommendations:</b>	
15(a)	<b>Sequential Rank of <u>Long-Term</u> Recommendations:</b>	
15(b)	<b>BAC Guiding Principle(s) Supported by Long Term Recommendations:</b>	

Note to persons completing this form: Please hold the Alt Key and tap Return/Enter Key to insert a new line in a cell.

**City of Fernandina Beach Beach Access Evaluation**

**SECTION 1: Beach Access Data and Recommendations**

1	<b>Date Form Completed:</b>	2/24/2021
2	<b>Beach Access Number and Location:</b>	25 Mizell
3	<b>Beach Access Type:</b>	Walkover
4	<b>Previous Construction/Repair/Walkover Removal Data:</b>	Renovated in 2007. Restore applied in 2013.
5	<b># of ADA/Non-ADA Parking Spaces:</b>	9/0
6	<b>Galvanized-steel round guardrail present?</b>	Yes
7	<b>Ramp(s) Present, if so, Streetside, Beachside or both:</b>	Yes
8	<b>Distance between streetside sand and interior foredune in linear feet:</b>	
9	<b>Short-Term Recommendations: <i>Recommended for implementation between 1-2 years.</i></b>	1) Given the age and use of walkover, BAC recommends maintenance projects to extend its lifespan including replacement of deck boards, new hardware on supports and repairs to some support boards. 2) At the end of the existing foredune trail, posts and ropes should be installed to delineate current trail and angled at less than 42° after the foredune to slow future storm surge. 3) sand fencing should be used to support the continued growth of new foredunes.
10	<b>Medium-Term Recommendations: <i>Recommended for implementation between 3-4 years.</i></b>	
11	<b>Long-Term Recommendations: <i>Recommended for implementation after 4 years (or possibly sooner) if warranted by future conditions.</i></b>	1) P&R should consider renovations that extend walkover over foredune and adding ramps on street and ocean side of walkover.
12	<b>Other beach access comments/observations including comments/observations provided by City Engineer and City P&amp;R personnel.</b>	This is a very long walkover. P&R: Some deck boards need replacing. Needs added hardware on supports. Some support boards split.

**SECTION 2: Short, Medium and Long-Term Recommendation Rankings and Guiding Principles. Do not fill in this section until Section 1-Beach Access Data and Recommendations have been completed for all beach accesses.**

		<b>Rank and Guiding Principles</b>	<b>(For City P&amp;R Dept. Only: Implementation Notes and Date Project Completed)</b>
13(a)	<b>Sequential Rank of <u>Short-Term</u> Recommendations.</b>		
13(b)	<b>BAC Guiding Principle(s) Supported by Short-Term Recommendations:</b>		
14(a)	<b>Sequential Rank of <u>Medium-Term</u> Recommendations:</b>		
14(b)	<b>BAC Guiding Principle(s) Supported by Medium-Term Recommendations:</b>		
15(a)	<b>Sequential Rank of <u>Long-Term</u> Recommendations:</b>		
15(b)	<b>BAC Guiding Principle(s) Supported by Long Term Recommendations:</b>		

Note to persons completing this form: Please hold the Alt Key and tap Return/Enter Key to insert a new line in a cell.

**City of Fernandina Beach Beach Access Evaluation**

**SECTION 1: Beach Access Data and Recommendations**

1	Date Form Completed:	3/1/2021
2	Beach Access Number and Location:	27 Allen
3	Beach Access Type:	Walkthrough
4	Previous Construction/Repair/Walkover Removal Data:	<b>Removed in 2020.</b>
5	# of ADA/Non-ADA Parking Spaces:	8/0
6	Galvanized-steel round guardrail present?	No
7	Ramp(s) Present, if so, Streetside, Beachside or both:	No
8	Distance between streetside sand and interior foredune in linear feet:	
9	Short-Term Recommendations: <i>Recommended for implementation between 1-2 years.</i>	1) There is a highly developed but add posts/ropes/fencing to preserve dunes, which has particular importance given diverse elevations of this walkthrough. 2)At the end of the existing foredune trail, posts and ropes should be installed to delineate current trail and angled at less than 42° after the foredune to slow future storm surge. 3) sand fencing should be used to support the continued growth of new foredunes.
10	Medium-Term Recommendations: <i>Recommended for implementation between 3-4 years.</i>	
11	Long-Term Recommendations: <i>Recommended for implementation after 4 years (or possibly sooner) if warranted by future conditions.</i>	Continue to assess for viability of replacing in the long-term.
12	Other beach access comments/observations including comments/observations provided by City Engineer and City P&R personnel.	[BAC Notes: The BAC does consider replacement of this previously-removed walkover, but to do so would be to construct an approximately \$300K walkover which has dramatic changes in elevations. Does have high-usage. Elevation drops from 18 ft to 8 ft in a 50 foot distance. P & R stated that 27, 28, and 29 were all at the end of their lifecycle when removed, and estimated that they'd been constructd in the 1980s.

**SECTION 2: Short, Medium and Long-Term Recommendation Rankings and Guiding Principles. Do not fill in this section until Section 1-Beach Access Data and Recommendations have been completed for all beach accesses.**

	Rank and Guiding Principles	(For City P&R Dept. Only: Implementation Notes and Date Project Completed)
13(a)	Sequential Rank of <u>Short-Term</u> Recommendations.	
13(b)	BAC Guiding Principle(s) Supported by Short-Term Recommendations:	
14(a)	Sequential Rank of <u>Medium-Term</u> Recommendations:	
14(b)	BAC Guiding Principle(s) Supported by Medium-Term Recommendations:	
15(a)	Sequential Rank of <u>Long-Term</u> Recommendations:	
15(b)	BAC Guiding Principle(s) Supported by Long Term Recommendations:	

Note to persons completing this form: Please hold the Alt Key and tap Return/Enter Key to insert a new line in a cell.

**City of Fernandina Beach Beach Access Evaluation**

**SECTION 1: Beach Access Data and Recommendations**

1	<b>Date Form Completed:</b>	2/24/2021
2	<b>Beach Access Number and Location:</b>	28 N. Casino
3	<b>Beach Access Type:</b>	Walkover
4	<b>Previous Construction/Repair/Walkover Removal Data:</b>	Restore applied in 2012; Rated "Poor" by Gillette in 2019.
5	<b># of ADA/Non-ADA Parking Spaces:</b>	12/0
6	<b>Galvanized-steel round guardrail present?</b>	No
7	<b>Ramp(s) Present, if so, Streetside, Beachside or both:</b>	Yes
8	<b>Distance between streetside sand and interior foredune in linear feet:</b>	
9	<b>Short-Term Recommendations: <i>Recommended for implementation between 1-2 years.</i></b>	1.) At the end of the existing foredune trail, posts and ropes should be installed to delineate current trail and angled at less than 42° after the foredune to slow future storm surge. 2) sand fencing should be used to support the continued growth of new foredunes.
10	<b>Medium-Term Recommendations: <i>Recommended for implementation between 3-4 years.</i></b>	Recommend removal and replacement at end of lifecycle unless adjacent 27 and 29 walkovers are maintained/replaced.
11	<b>Long-Term Recommendations: <i>Recommended for implementation after 4 years (or possibly sooner) if warranted by future conditions.</i></b>	Consider replacement if walkthroughs on each side are not maintained or replaced.
12	<b>Other beach access comments/observations including comments/observations provided by City Engineer and City P&amp;R personnel.</b>	P&R: Many deck boards need replacing and needs an engineering inspection. J. Pitcherille recommends removal in 3-4 years at end of walkovers lifecycle.

**SECTION 2: Short, Medium and Long-Term Recommendation Rankings and Guiding Principles. Do not fill in this section until Section 1-Beach Access Data and Recommendations have been completed for all beach accesses.**

	<b>Rank and Guiding Principles</b>	<b>(For City P&amp;R Dept. Only: Implementation Notes and Date Project Completed)</b>
13(a)	<b>Sequential Rank of <u>Short-Term</u> Recommendations.</b>	
13(b)	<b>BAC Guiding Principle(s) Supported by Short-Term Recommendations:</b>	
14(a)	<b>Sequential Rank of <u>Medium-Term</u> Recommendations:</b>	
14(b)	<b>BAC Guiding Principle(s) Supported by Medium-Term Recommendations:</b>	
15(a)	<b>Sequential Rank of <u>Long-Term</u> Recommendations:</b>	
15(b)	<b>BAC Guiding Principle(s) Supported by Long Term Recommendations:</b>	

Note to persons completing this form: Please hold the Alt Key and tap Return/Enter Key to insert a new line in a cell.

**City of Fernandina Beach Beach Access Evaluation**

**SECTION 1: Beach Access Data and Recommendations**

1	Date Form Completed:	3/1/2021
2	Beach Access Number and Location:	29 S. Casino
3	Beach Access Type:	Walkover
4	Previous Construction/Repair/Walkover Removal Data:	
5	# of ADA/Non-ADA Parking Spaces:	7/0
6	Galvanized-steel round guardrail present?	No
7	Ramp(s) Present, if so, Streetside, Beachside or both:	Yes
8	Distance between streetside sand and interior foredune in linear feet:	
9	Short-Term Recommendations: <i>Recommended for implementation between 1-2 years.</i>	1) P & R should perform sufficient maintenance on Walkover to allow a minimum of 4-5 years of safe public usage. 1)At the end of the existing foredune trail, posts and ropes should be installed to delineate current trail and angled at less than 42°after the foredune to slow future storm surge. 2) sand fencing should be used to support the continued growth of new foredunes.
10	Medium-Term Recommendations: <i>Recommended for implementation between 3-4 years.</i>	
11	Long-Term Recommendations: <i>Recommended for implementation after 4 years (or possibly sooner) if warranted by future conditions.</i>	Could be recommended for removal based on low use at end of lifecycle as long as 28 is maintained/replaced.
12	Other beach access comments/observations including comments/observations provided by City Engineer and City P&R personnel.	P&R: Many deck boards need to be replaced. [BAC Notes: Could support 3-4 parking spaces. Walkover is approx. 245 feet long and continues into the dune. Needs a ramp on the ocean-side. Although aged, C. George advises walkover is in good shape and can last 4-5 years.

**SECTION 2: Short, Medium and Long-Term Recommendation Rankings and Guiding Principles. Do not fill in this section until Section 1-Beach Access Data and Recommendations have been completed for all beach accesses.**

	Rank and Guiding Principles	(For City P&R Dept. Only: Implementation Notes and Date Project Completed)
13(a) Sequential Rank of <u>Short-Term</u> Recommendations.		
13(b) BAC Guiding Principle(s) Supported by Short-Term Recommendations:		
14(a) Sequential Rank of <u>Medium-Term</u> Recommendations:		
14(b) BAC Guiding Principle(s) Supported by Medium-Term Recommendations:		
15(a) Sequential Rank of <u>Long-Term</u> Recommendations:		
15(b) BAC Guiding Principle(s) Supported by Long Term Recommendations:		

Note to persons completing this form: Please hold the Alt Key and tap Return/Enter Key to insert a new line in a cell.



**City of Fernandina Beach Beach Access Evaluation**

**SECTION 1: Beach Access Data and Recommendations**

1	Date Form Completed:	3/1/2021
2	Beach Access Number and Location:	30 Simmons
3	Beach Access Type:	Walkover
4	Previous Construction/Repair/Walkover Removal Data:	Needs renovation. Rated Fair to Poor by Gillette in 2019.
5	# of ADA/Non-ADA Parking Spaces:	2/0
6	Galvanized-steel round guardrail present?	No
7	Ramp(s) Present, if so, Streetside, Beachside or both:	Yes
8	Distance between streetside sand and interior foredune in linear feet:	
9	Short-Term Recommendations: <i>Recommended for implementation between 1-2 years.</i>	1) Budget for and complete necessary Stormwater improvements to correct for heavy erosion, requires a storm drain similar to the one located at Beach Access 38. 2) Important Walkover given its location at end of River to Sea Trail and high-level of usage. 3.) Budget for and complete major renovations (or replacement) to allow walkover to remain intact. 4) Also extend walkover over foredune. 5) At the end of the existing foredune trail, posts and ropes should be installed to delineate current trail and angled at less than 42° after the foredune to slow future storm surge. 6) Sand fencing should be used to support the continued growth of new foredunes.
10	Medium-Term Recommendations: <i>Recommended for implementation between 3-4 years.</i>	
11	Long-Term Recommendations: <i>Recommended for implementation after 4 years (or possibly sooner) if warranted by future conditions.</i>	
12	Other beach access comments/observations including comments/observations provided by City Engineer and City P&R personnel.	P & R: Needs replacement or renovation. Lower section joists are rotten.

**SECTION 2: Short, Medium and Long-Term Recommendation Rankings and Guiding Principles. Do not fill in this section until Section 1-Beach Access Data and Recommendations have been completed for all beach accesses.**

	Rank and Guiding Principles	(For City P&R Dept. Only: Implementation Notes and Date Project Completed)
13(a) Sequential Rank of <u>Short-Term</u> Recommendations.		
13(b) BAC Guiding Principle(s) Supported by Short-Term Recommendations:		
14(a) Sequential Rank of <u>Medium-Term</u> Recommendations:		
14(b) BAC Guiding Principle(s) Supported by Medium-Term Recommendations:		
15(a) Sequential Rank of <u>Long-Term</u> Recommendations:		
15(b) BAC Guiding Principle(s) Supported by Long Term Recommendations:		

Note to persons completing this form: Please hold the Alt Key and tap Return/Enter Key to insert a new line in a cell.

**City of Fernandina Beach Beach Access Evaluation**

**SECTION 1: Beach Access Data and Recommendations**

1	<b>Date Form Completed:</b>	3/1/2021
2	<b>Beach Access Number and Location:</b>	31 Hutchins
3	<b>Beach Access Type:</b>	Walkover
4	<b>Previous Construction/Repair/Walkover Removal Data:</b>	Constructed in 2005. Restore applied in 2012. Completely re-decked hand and side rails in 2020. Redecked in 2021.
5	<b># of ADA/Non-ADA Parking Spaces:</b>	2/0
6	<b>Galvanized-steel round guardrail present?</b>	No
7	<b>Ramp(s) Present, if so, Streetside, Beachside or both:</b>	Yes
8	<b>Distance between streetside sand and interior foredune in linear feet:</b>	
9	<b>Short-Term Recommendations: <i>Recommended for implementation between 1-2 years.</i></b>	1) Install Posts/Ropes at one branch of Y in trail. 2) At the end of the existing foredune trail, posts and ropes should be installed to delineate current trail and angled at less than 42° after the foredune to slow future storm surge. 3) Sand fencing should be used to support the continued growth of new foredunes.
10	<b>Medium-Term Recommendations: <i>Recommended for implementation between 3-4 years.</i></b>	
11	<b>Long-Term Recommendations: <i>Recommended for implementation after 4 years (or possibly sooner) if warranted by future conditions.</i></b>	
12	<b>Other beach access comments/observations including comments/observations provided by City Engineer and City P&amp;R personnel.</b>	:

**SECTION 2: Short, Medium and Long-Term Recommendation Rankings and Guiding Principles. Do not fill in this section until Section 1-Beach Access Data and Recommendations have been completed for all beach accesses.**

	<b>Rank and Guiding Principles</b>	<b>(For City P&amp;R Dept. Only: Implementation Notes and Date Project Completed)</b>
13(a) <b>Sequential Rank of <u>Short-Term</u> Recommendations.</b>		
13(b) <b>BAC Guiding Principle(s) Supported by Short-Term Recommendations:</b>		
14(a) <b>Sequential Rank of <u>Medium-Term</u> Recommendations:</b>		
14(b) <b>BAC Guiding Principle(s) Supported by Medium-Term Recommendations:</b>		
15(a) <b>Sequential Rank of <u>Long-Term</u> Recommendations:</b>		
15(b) <b>BAC Guiding Principle(s) Supported by Long Term Recommendations:</b>		

Note to persons completing this form: Please hold the Alt Key and tap Return/Enter Key to insert a new line in a cell.

**City of Fernandina Beach Beach Access Evaluation**

**SECTION 1: Beach Access Data and Recommendations**

1	Date Form Completed:	3/2/2021
2	Beach Access Number and Location:	33 Oklawaha
3	Beach Access Type:	Walkover
4	Previous Construction/Repair/Walkover Removal Data:	
5	# of ADA/Non-ADA Parking Spaces:	2/0
6	Galvanized-steel round guardrail present?	No
7	Ramp(s) Present, if so, Streetside, Beachside or both:	Yes
8	Distance between streetside sand and interior foredune in linear feet:	
9	Short-Term Recommendations: <i>Recommended for implementation between 1-2 years.</i>	1) Cut-back shrubbery to clear parking for 2 vehicles. 2) Move Beach Access sign to a more visible location. 3) At the end of the existing foredune trail, posts and ropes should be installed to delineate current trail and angled at less than 42° after the foredune to slow future storm surge. 4) Sand fencing should be used to support the continued growth of new foredunes.
10	Medium-Term Recommendations: <i>Recommended for implementation between 3-4 years.</i>	
11	Long-Term Recommendations: <i>Recommended for implementation after 4 years (or possibly sooner) if warranted by future conditions.</i>	
12	Other beach access comments/observations including comments/observations provided by City Engineer and City P&R personnel.	[BAC Notes: Mac noted that the ROW was returned to City after public outcry in the past. J. Pitcheralle says long-term plan is to phase this into a trail as it's not high-use. Is used by surfers as there is a sandbar.]

**SECTION 2: Short, Medium and Long-Term Recommendation Rankings and Guiding Principles. Do not fill in this section until Section 1-Beach Access Data and Recommendations have been completed for all beach accesses.**

	Rank and Guiding Principles	(For City P&R Dept. Only: Implementation Notes and Date Project Completed)
13(a) Sequential Rank of <u>Short-Term</u> Recommendations.		
13(b) BAC Guiding Principle(s) Supported by Short-Term Recommendations:		
14(a) Sequential Rank of <u>Medium-Term</u> Recommendations:		
14(b) BAC Guiding Principle(s) Supported by Medium-Term Recommendations:		
15(a) Sequential Rank of <u>Long-Term</u> Recommendations:		
15(b) BAC Guiding Principle(s) Supported by Long Term Recommendations:		

Note to persons completing this form: Please hold the Alt Key and tap Return/Enter Key to insert a new line in a cell.

**City of Fernandina Beach Beach Access Evaluation**

**SECTION 1: Beach Access Data and Recommendations**

1	<b>Date Form Completed:</b>	3/1/2021
2	<b>Beach Access Number and Location:</b>	34 Mantanzas
3	<b>Beach Access Type:</b>	Walkover
4	<b>Previous Construction/Repair/Walkover Removal Data:</b>	Constructed in 2006. Restore applied in 2012.
5	<b># of ADA/Non-ADA Parking Spaces:</b>	2/0
6	<b>Galvanized-steel round guardrail present?</b>	Yes
7	<b>Ramp(s) Present, if so, Streetside, Beachside or both:</b>	Yes
8	<b>Distance between streetside sand and interior foredune in linear feet:</b>	
9	<b>Short-Term Recommendations: <i>Recommended for implementation between 1-2 years.</i></b>	1) Re-deck and other improvements required to maintain integrity of structure.2)At the end of the existing foredune trail, posts and ropes should be installed to delineate current trail and angled at less than 42°after the foredune to slow future storm surge. 3) sand fencing should be used to support the continued growth of new foredunes.
10	<b>Medium-Term Recommendations: <i>Recommended for implementation between 3-4 years.</i></b>	1) Continue to make repairs necessary to extend the lifespan of this aging walkover.
11	<b>Long-Term Recommendations: <i>Recommended for implementation after 4 years (or possibly sooner) if warranted by future conditions.</i></b>	
12	<b>Other beach access comments/observations including comments/observations provided by City Engineer and City P&amp;R personnel.</b>	P & R: Needs to be redecked. Ramp and steps on beach side overtaken by dunes.

**SECTION 2: Short, Medium and Long-Term Recommendation Rankings and Guiding Principles. Do not fill in this section until Section 1-Beach Access Data and Recommendations have been completed for all beach accesses.**

	<b>Rank and Guiding Principles</b>	<b>(For City P&amp;R Dept. Only: Implementation Notes and Date Project Completed)</b>
13(a) <b>Sequential Rank of <u>Short-Term</u> Recommendations.</b>		
13(b) <b>BAC Guiding Principle(s) Supported by Short-Term Recommendations:</b>		
14(a) <b>Sequential Rank of <u>Medium-Term</u> Recommendations:</b>		
14(b) <b>BAC Guiding Principle(s) Supported by Medium-Term Recommendations:</b>		
15(a) <b>Sequential Rank of <u>Long-Term</u> Recommendations:</b>		
15(b) <b>BAC Guiding Principle(s) Supported by Long Term Recommendations:</b>		

Note to persons completing this form: Please hold the Alt Key and tap Return/Enter Key to insert a new line in a cell.

**City of Fernandina Beach Beach Access Evaluation**

**SECTION 1: Beach Access Data and Recommendations**

1	Date Form Completed:	3/1/2021
2	Beach Access Number and Location:	35 Manatee
3	Beach Access Type:	Walkover
4	Previous Construction/Repair/Walkover Removal Data:	Restore applied in 2012.
5	# of ADA/Non-ADA Parking Spaces:	11/0
6	Galvanized-steel round guardrail present?	No
7	Ramp(s) Present, if so, Streetside, Beachside or both:	Yes
8	Distance between streetside sand and interior foredune in linear feet:	
9	Short-Term Recommendations: <i>Recommended for implementation between 1-2 years.</i>	1) Walkover has 2 ramps for no reason. Remove duplicate ramp which is oldest/most deteriorated. Beach Accesses 35, 35S and 39 are three that are ideal for installation of new posts/ropes/and fencing with angling of trail over/near foredune because dunes are in growth phase.
10	Medium-Term Recommendations: <i>Recommended for implementation between 3-4 years.</i>	
11	Long-Term Recommendations: <i>Recommended for implementation after 4 years (or possibly sooner) if warranted by future conditions.</i>	
12	Other beach access comments/observations including comments/observations provided by City Engineer and City P&R personnel.	P & R: Many deck boards need to be replaced.

**SECTION 2: Short, Medium and Long-Term Recommendation Rankings and Guiding Principles. Do not fill in this section until Section 1-Beach Access Data and Recommendations have been completed for all beach accesses.**

	Rank and Guiding Principles	(For City P&R Dept. Only: Implementation Notes and Date Project Completed)
13(a) Sequential Rank of <u>Short-Term</u> Recommendations.		
13(b) BAC Guiding Principle(s) Supported by Short-Term Recommendations:		
14(a) Sequential Rank of <u>Medium-Term</u> Recommendations:		
14(b) BAC Guiding Principle(s) Supported by Medium-Term Recommendations:		
15(a) Sequential Rank of <u>Long-Term</u> Recommendations:		
15(b) BAC Guiding Principle(s) Supported by Long Term Recommendations:		

Note to persons completing this form: Please hold the Alt Key and tap Return/Enter Key to insert a new line in a cell.

**City of Fernandina Beach Beach Access Evaluation**

**SECTION 1: Beach Access Data and Recommendations**

1	Date Form Completed:	3/2/2021
2	Beach Access Number and Location:	35S Suwannee
3	Beach Access Type:	Walkthrough
4	Previous Construction/Repair/Walkover Removal Data:	<b>Walkover removed in 2019</b>
5	# of ADA/Non-ADA Parking Spaces:	9/0
6	Galvanized-steel round guardrail present?	No
7	Ramp(s) Present, if so, Streetside, Beachside or both:	No
8	Distance between streetside sand and interior foredune in linear feet:	
9	Short-Term Recommendations: <i>Recommended for implementation between 1-2 years.</i>	1.) Beach Accesses 35, 35S, 36, and 39 are four that are ideal for installation of new posts/ropes/and fencing with angling of trail over/near foredune because dunes is in growth phase. One of six that was removed in 2019. Is high-use and has parking for 9 and could be recommended for replacement. 2.) Stormwater solution is needed to correct continuous washout where parking lot and trail meet.
10	Medium-Term Recommendations: <i>Recommended for implementation between 3-4 years.</i>	
11	Long-Term Recommendations: <i>Recommended for implementation after 4 years (or possibly sooner) if warranted by future conditions.</i>	Could be considered for replacement.
12	Other beach access comments/observations including comments/observations provided by City Engineer and City P&R personnel.	P & R: There is a continuous washout where parking lot and trail meet. [BAC Notes: 35S is a great "cardio workout".

**SECTION 2: Short, Medium and Long-Term Recommendation Rankings and Guiding Principles. Do not fill in this section until Section 1-Beach Access Data and Recommendations have been completed for all beach accesses.**

	Rank and Guiding Principles	(For City P&R Dept. Only: Implementation Notes and Date Project Completed)
13(a)	Sequential Rank of <u>Short-Term</u> Recommendations.	
13(b)	BAC Guiding Principle(s) Supported by Short-Term Recommendations:	
14(a)	Sequential Rank of <u>Medium-Term</u> Recommendations:	
14(b)	BAC Guiding Principle(s) Supported by Medium-Term Recommendations:	
15(a)	Sequential Rank of <u>Long-Term</u> Recommendations:	
15(b)	BAC Guiding Principle(s) Supported by Long Term Recommendations:	

Note to persons completing this form: Please hold the Alt Key and tap Return/Enter Key to insert a new line in a cell.

**City of Fernandina Beach Beach Access Evaluation**

**SECTION 1: Beach Access Data and Recommendations**

1	<b>Date Form Completed:</b>	3/1/2021
2	<b>Beach Access Number and Location:</b>	36 Kissimmee
3	<b>Beach Access Type:</b>	Walkover
4	<b>Previous Construction/Repair/Walkover Removal Data:</b>	Constructed in 2008. Restore applied in 2013.
5	<b># of ADA/Non-ADA Parking Spaces:</b>	6/0
6	<b>Galvanized-steel round guardrail present?</b>	No
7	<b>Ramp(s) Present, if so, Streetside, Beachside or both:</b>	Yes
8	<b>Distance between streetside sand and interior foredune in linear feet:</b>	
9	<b>Short-Term Recommendations: <i>Recommended for implementation between 1-2 years.</i></b>	1.) Beach Accesses 35, 35S, 36, and 39 are four walkovers that are ideal for installation of new posts/ropes/and fencing with angling of trail over/near foredune because dunes is in growth phase. 2.) At the end of the existing foredune trail, posts and ropes should be installed to delineate current trail and angled at less than 42° after the foredune to slow future storm surge. 3.) Sand fencing should be used to support the continued growth of new foredunes.
10	<b>Medium-Term Recommendations: <i>Recommended for implementation between 3-4 years.</i></b>	
11	<b>Long-Term Recommendations: <i>Recommended for implementation after 4 years (or possibly sooner) if warranted by future conditions.</i></b>	
12	<b>Other beach access comments/observations including comments/observations provided by City Engineer and City P&amp;R personnel.</b>	P & R: Some deck boards need to be replaced.

**SECTION 2: Short, Medium and Long-Term Recommendation Rankings and Guiding Principles. Do not fill in this section until Section 1-Beach Access Data and Recommendations have been completed for all beach accesses.**

	<b>Rank and Guiding Principles</b>	<b>(For City P&amp;R Dept. Only: Implementation Notes and Date Project Completed)</b>
13(a)	<b>Sequential Rank of <u>Short-Term</u> Recommendations.</b>	
13(b)	<b>BAC Guiding Principle(s) Supported by Short-Term Recommendations:</b>	
14(a)	<b>Sequential Rank of <u>Medium-Term</u> Recommendations:</b>	
14(b)	<b>BAC Guiding Principle(s) Supported by Medium-Term Recommendations:</b>	
15(a)	<b>Sequential Rank of <u>Long-Term</u> Recommendations:</b>	
15(b)	<b>BAC Guiding Principle(s) Supported by Long Term Recommendations:</b>	

Note to persons completing this form: Please hold the Alt Key and tap Return/Enter Key to insert a new line in a cell.



**City of Fernandina Beach Beach Access Evaluation**

**SECTION 1: Beach Access Data and Recommendations**

1	Date Form Completed:	3/1/2021
2	Beach Access Number and Location:	37 Alachua
3	Beach Access Type:	Walkover
4	Previous Construction/Repair/Walkover Removal Data:	Constructed in 2009. Restore applied in 2011. Major renovation in 2021.
5	# of ADA/Non-ADA Parking Spaces:	8/1
6	Galvanized-steel round guardrail present?	No
7	Ramp(s) Present, if so, Streetside, Beachside or both:	Yes
8	Distance between streetside sand and interior foredune in linear feet:	
9	Short-Term Recommendations: <i>Recommended for implementation between 1-2 years.</i>	1)At the end of the existing foredune trail, posts and ropes should be installed to delineate current trail and angled at less than 42°after the foredune to slow future storm surge. 2) sand fencing should be used to support the continued growth of new foredunes.
10	Medium-Term Recommendations: <i>Recommended for implementation between 3-4 years.</i>	
11	Long-Term Recommendations: <i>Recommended for implementation after 4 years (or possibly sooner) if warranted by future conditions.</i>	
12	Other beach access comments/observations including comments/observations provided by City Engineer and City P&R personnel.	

**SECTION 2: Short, Medium and Long-Term Recommendation Rankings and Guiding Principles. Do not fill in this section until Section 1-Beach Access Data and Recommendations have been completed for all beach accesses.**

	Rank and Guiding Principles	(For City P&R Dept. Only: Implementation Notes and Date Project Completed)
13(a) Sequential Rank of <u>Short-Term</u> Recommendations.		
13(b) BAC Guiding Principle(s) Supported by Short-Term Recommendations:		
14(a) Sequential Rank of <u>Medium-Term</u> Recommendations:		
14(b) BAC Guiding Principle(s) Supported by Medium-Term Recommendations:		
15(a) Sequential Rank of <u>Long-Term</u> Recommendations:		
15(b) BAC Guiding Principle(s) Supported by Long Term Recommendations:		

Note to persons completing this form: Please hold the Alt Key and tap Return/Enter Key to insert a new line in a cell.

City of Fernandina Beach Beach Access Evaluation

**SECTION 1: Beach Access Data and Recommendations**

1	Date Form Completed:	3/2/2021
2	Beach Access Number and Location:	38 Osceola
3	Beach Access Type:	Walkthrough
4	Previous Construction/Repair/Walkover Removal Data:	Walkover removed in 2019
5	# of ADA/Non-ADA Parking Spaces:	8/0
6	Galvanized-steel round guardrail present?	No
7	Ramp(s) Present, if so, Streetside, Beachside or both:	No
8	Distance between streetside sand and interior foredune in linear feet:	
9	Short-Term Recommendations: <i>Recommended for implementation between 1-2 years.</i>	1)At the end of the existing foredune trail, posts and ropes should be installed to delineate current trail and angled at less than 42° after the foredune to slow future storm surge. 2) Sand fencing should be used to support the continued growth of new foredunes.
10	Medium-Term Recommendations: <i>Recommended for implementation between 3-4 years.</i>	
11	Long-Term Recommendations: <i>Recommended for implementation after 4 years (or possibly sooner) if warranted by future conditions.</i>	
12	Other beach access comments/observations including comments/observations provided by City Engineer and City P&R personnel.	[BAC Notes: Used to be a nice walkover, some stairs still remain. There is a camera overlooking parking lot.] Low-usage and near-by houses have private walkthroughs.

**SECTION 2: Short, Medium and Long-Term Recommendation Rankings and Guiding Principles. Do not fill in this section until Section 1-Beach Access Data and Recommendations have been completed for all beach accesses.**

	Rank and Guiding Principles	(For City P&R Dept. Only: Implementation Notes and Date Project Completed)
13(a) Sequential Rank of <u>Short-Term</u> Recommendations.		
13(b) BAC Guiding Principle(s) Supported by Short-Term Recommendations:		
14(a) Sequential Rank of <u>Medium-Term</u> Recommendations:		
14(b) BAC Guiding Principle(s) Supported by Medium-Term Recommendations:		
15(a) Sequential Rank of <u>Long-Term</u> Recommendations:		
15(b) BAC Guiding Principle(s) Supported by Long Term Recommendations:		

Note to persons completing this form: Please hold the Alt Key and tap Return/Enter Key to insert a new line in a cell.

**City of Fernandina Beach Beach Access Evaluation**

**SECTION 1: Beach Access Data and Recommendations**

1	<b>Date Form Completed:</b>	3/2/2021
2	<b>Beach Access Number and Location:</b>	39 Ozello
3	<b>Beach Access Type:</b>	Walkover
4	<b>Previous Construction/Repair/Walkover Removal Data:</b>	Renovated in 2009. Rated "Poor" by Gillette in 2019.
5	<b># of ADA/Non-ADA Parking Spaces:</b>	8/0
6	<b>Galvanized-steel round guardrail present?</b>	No
7	<b>Ramp(s) Present, if so, Streetside, Beachside or both:</b>	Yes
8	<b>Distance between streetside sand and interior foredune in linear feet:</b>	
9	<b>Short-Term Recommendations: <i>Recommended for implementation between 1-2 years.</i></b>	Beach Accesses 35, 35S, 36 and 39 are four walkovers that are ideal for installation of new posts/rops/and fencing with angling of trail over/near foredune because dunes is in growth phase. Fix retaining wall on south side of parking lot which is losing soil.
10	<b>Medium-Term Recommendations: <i>Recommended for implementation between 3-4 years.</i></b>	
11	<b>Long-Term Recommendations: <i>Recommended for implementation after 4 years (or possibly sooner) if warranted by future conditions.</i></b>	
12	<b>Other beach access comments/observations including comments/observations provided by City Engineer and City P&amp;R personnel.</b>	P & R: Needs engineering inspection. Some deck boards need replacing. Retaining wall in parking lot seems to be failing.

**SECTION 2: Short, Medium and Long-Term Recommendation Rankings and Guiding Principles. Do not fill in this section until Section 1-Beach Access Data and Recommendations have been completed for all beach accesses.**

	<b>Rank and Guiding Principles</b>	<b>(For City P&amp;R Dept. Only: Implementation Notes and Date Project Completed)</b>
13(a)	<b>Sequential Rank of <u>Short-Term</u> Recommendations.</b>	
13(b)	<b>BAC Guiding Principle(s) Supported by Short-Term Recommendations:</b>	
14(a)	<b>Sequential Rank of <u>Medium-Term</u> Recommendations:</b>	
14(b)	<b>BAC Guiding Principle(s) Supported by Medium-Term Recommendations:</b>	
15(a)	<b>Sequential Rank of <u>Long-Term</u> Recommendations:</b>	
15(b)	<b>BAC Guiding Principle(s) Supported by Long Term Recommendations:</b>	

Note to persons completing this form: Please hold the Alt Key and tap Return/Enter Key to insert a new line in a cell.

**City of Fernandina Beach Beach Access (Draft 1 for 3/11/21 Meeting)**

**SECTION 1: Beach Access Data and Recommendations**

1	<b>Date Form Completed:</b>	3/2/2021
2	<b>Beach Access Number and Location:</b>	40 Pasco
3	<b>Beach Access Type:</b>	Walkthrough
4	<b>Previous Construction/Repair/Walkover Removal Data:</b>	Walkover removed in 2019. Completed major stabilization project in 2020 using stone, fabric cloth and sand.
5	<b># of ADA/Non-ADA Parking Spaces:</b>	10/0
6	<b>Galvanized-steel round guardrail present?</b>	No
7	<b>Ramp(s) Present, if so, Streetside, Beachside or both:</b>	No
8	<b>Distance between streetside sand and interior foredune in linear feet:</b>	
9	<b>Short-Term Recommendations: <i>Recommended for implementation between 1-2 years.</i></b>	1) Budget for and install new Beach Walkover with features that make is more accessible to persons with mobility issues. Walkover should have wider deck at the end with railing at a level that doesn't block view of seated individuals. 2) At the end of the existing foredune trail, posts and ropes should be installed to delineate current trail and angled at less than 42° after the foredune to slow future storm surge. 3) Sand fencing should be used to support the continued growth of new foredunes.
10	<b>Medium-Term Recommendations: <i>Recommended for implementation between 3-4 years.</i></b>	
11	<b>Long-Term Recommendations: <i>Recommended for implementation after 4 years (or possibly sooner) if warranted by future conditions.</i></b>	
12	<b>Other beach access comments/observations including comments/observations provided by City Engineer and City P&amp;R personnel.</b>	[BAC Notes: If we don't change the elevation from parking, a replacement walkover would not need grab rails. Given it's flat elevation, it could be handicapped-friendly, but Charlie says biggest concern with full ADA compliance is having ADA accessibility toward the edge. Charlie pointed out removal of walkover had exasperated drainages issues because it resulted in plannt trampling. Busy, has all of houses on Milton Road, some 1st Ave, and some traffic from people from parking at Golf Course.

**SECTION 2: Short, Medium and Long-Term Recommendation Rankings and Guiding Principles. Do not fill in this section until Section 1-Beach Access Data and Recommendations have been completed for all beach accesses.**

	<b>Rank and Guiding Principles</b>	<b>(For City P&amp;R Dept. Only: Implementation Notes and Date Project Completed)</b>
13(a)	<b>Sequential Rank of <u>Short-Term</u> Recommendations.</b>	
13(b)	<b>BAC Guiding Principle(s) Supported by Short-Term Recommendations:</b>	
14(a)	<b>Sequential Rank of <u>Medium-Term</u> Recommendations:</b>	
14(b)	<b>BAC Guiding Principle(s) Supported by Medium-Term Recommendations:</b>	
15(a)	<b>Sequential Rank of <u>Long-Term</u> Recommendations:</b>	
15(b)	<b>BAC Guiding Principle(s) Supported by Long Term Recommendations:</b>	

Note to persons completing this form: Please hold the Alt Key and tap Return/Enter Key to insert a new line in a cell.